

MBARA Diver's Reef Survey Form Rev 24 Jun 2011

Clear Form

Reef Number and Name

Latitude Longitude Was published lat/lon correct? Yes No

GPS Manufacturer & Model:

Sonar Depth (feet) Survey Date Time

Weather Conditions Sea Condition

Boat Name Boat Captain

Dive Leader

Dive Team Members

Depth Gauge Depth (feet) Diver Bottom Time (minutes)

Water Temp Surface (Fahrenheit) Water Temp Bottom (Fahrenheit)

Water Visibility Surface (feet) Water Visibility Bottom (feet)

Thermocline Depth (feet) Current Direction Current Speed (knots)

Other Water Column Characteristics (check all that apply)

Plankton Algae Jellyfish Turbid Other

Bottom Composition (check all that apply)

Sand Silt Mud Gravel Shell Other

Reef Materials & Quantity

Reef Height at Highest Point (measured from base to top of the reef)(feet)

Physical Condition (Durability, stability, storm damage, other damage or movement):

No damage Minor damage Moderate damage Major damage
 No movement Minor movement Moderate movement Major movement

Explain damage/movement and suspected cause

Fish Counts (Click on the hyper-links below for identification)

Angelfish-Blue	<input type="radio"/> 1	<input type="radio"/> 2-10	<input type="radio"/> 11-100	<input type="radio"/> 101+	Length (inches)	<input type="text"/>	Comments	<input type="text"/>	
Angelfish-Queen	<input type="radio"/> 1	<input type="radio"/> 2-10	<input type="radio"/> 11-100	<input type="radio"/> 101+	Length (inches)	<input type="text"/>	Comments	<input type="text"/>	
Barracuda-Great	<input type="radio"/> 1	<input type="radio"/> 2-10	<input type="radio"/> 11-100	<input type="radio"/> 101+	Length (inches)	<input type="text"/>	Comments	<input type="text"/>	
Barracuda-Guaguanche	<input type="radio"/> 1	<input type="radio"/> 2-10	<input type="radio"/> 11-100	<input type="radio"/> 101+	Length (inches)	<input type="text"/>	Comments	<input type="text"/>	
Batfish-Polka-Dot	<input type="radio"/> 1	<input type="radio"/> 2-10	<input type="radio"/> 11-100	<input type="radio"/> 101+	Length (inches)	<input type="text"/>	Comments	<input type="text"/>	
Blenny-Molly-Miller	<input type="radio"/> 1	<input type="radio"/> 2-10	<input type="radio"/> 11-100	<input type="radio"/> 101+	Length (inches)	<input type="text"/>	Comments	<input type="text"/>	
Blenny-Seaweed	<input type="radio"/> 1	<input type="radio"/> 2-10	<input checked="" type="radio"/> 11-100	<input type="radio"/> 101+	Length (inches)	<input type="text" value="1-2"/>	Comments	<input type="text"/>	
Blenny-Tessellated	<input type="radio"/> 1	<input type="radio"/> 2-10	<input type="radio"/> 11-100	<input type="radio"/> 101+	Length (inches)	<input type="text"/>	Comments	<input type="text"/>	
Blenny?	<input type="text"/>	<input type="radio"/> 1	<input type="radio"/> 2-10	<input type="radio"/> 11-100	<input type="radio"/> 101+	Length (inches)	<input type="text"/>	Comments	<input type="text"/>
Butterflyfish-Spotfin	<input type="radio"/> 1	<input type="radio"/> 2-10	<input type="radio"/> 11-100	<input type="radio"/> 101+	Length (inches)	<input type="text"/>	Comments	<input type="text"/>	
Butterflyfish?	<input type="text"/>	<input type="radio"/> 1	<input type="radio"/> 2-10	<input type="radio"/> 11-100	<input type="radio"/> 101+	Length (inches)	<input type="text"/>	Comments	<input type="text"/>
Cardinalfish-Two-Spot	<input type="radio"/> 1	<input checked="" type="radio"/> 2-10	<input type="radio"/> 11-100	<input type="radio"/> 101+	Length (inches)	<input type="text" value="1"/>	Comments	<input type="text"/>	
Chromis-Purple-Reeffish	<input type="radio"/> 1	<input type="radio"/> 2-10	<input type="radio"/> 11-100	<input type="radio"/> 101+	Length (inches)	<input type="text"/>	Comments	<input type="text"/>	
Chromis-Yellowtail-Reeffish	<input type="radio"/> 1	<input type="radio"/> 2-10	<input type="radio"/> 11-100	<input type="radio"/> 101+	Length (inches)	<input type="text"/>	Comments	<input type="text"/>	
Cobia (Ling)	<input type="radio"/> 1	<input type="radio"/> 2-10	<input type="radio"/> 11-100	<input type="radio"/> 101+	Length (inches)	<input type="text"/>	Comments	<input type="text"/>	
Cowfish-Scrawled	<input type="radio"/> 1	<input type="radio"/> 2-10	<input type="radio"/> 11-100	<input type="radio"/> 101+	Length (inches)	<input type="text"/>	Comments	<input type="text"/>	
Damsel-fish-Cocoa	<input type="radio"/> 1	<input type="radio"/> 2-10	<input checked="" type="radio"/> 11-100	<input type="radio"/> 101+	Length (inches)	<input type="text" value="1"/>	Comments	<input type="text"/>	
Damsel-fish?	<input type="text"/>	<input type="radio"/> 1	<input type="radio"/> 2-10	<input type="radio"/> 11-100	<input type="radio"/> 101+	Length (inches)	<input type="text"/>	Comments	<input type="text"/>
Dolphin?	<input type="text"/>	<input type="radio"/> 1	<input type="radio"/> 2-10	<input type="radio"/> 11-100	<input type="radio"/> 101+	Length (inches)	<input type="text"/>	Comments	<input type="text"/>
Drum-Cubbyu	<input type="radio"/> 1	<input checked="" type="radio"/> 2-10	<input type="radio"/> 11-100	<input type="radio"/> 101+	Length (inches)	<input type="text" value="2"/>	Comments	<input type="text"/>	
Drum-Jackknifefish	<input type="radio"/> 1	<input type="radio"/> 2-10	<input type="radio"/> 11-100	<input type="radio"/> 101+	Length (inches)	<input type="text"/>	Comments	<input type="text"/>	
Eel?	<input type="text"/>	<input type="radio"/> 1	<input type="radio"/> 2-10	<input type="radio"/> 11-100	<input type="radio"/> 101+	Length (inches)	<input type="text"/>	Comments	<input type="text"/>
Flounder-Gulf	<input checked="" type="radio"/> 1	<input type="radio"/> 2-10	<input type="radio"/> 11-100	<input type="radio"/> 101+	Length (inches)	<input type="text"/>	Comments	<input type="text"/>	
Filefish?	<input type="text"/>	<input type="radio"/> 1	<input type="radio"/> 2-10	<input type="radio"/> 11-100	<input type="radio"/> 101+	Length (inches)	<input type="text"/>	Comments	<input type="text"/>
Frogfish-Ocellated	<input type="radio"/> 1	<input type="radio"/> 2-10	<input type="radio"/> 11-100	<input type="radio"/> 101+	Length (inches)	<input type="text"/>	Comments	<input type="text"/>	
Goby-Spotted	<input type="radio"/> 1	<input type="radio"/> 2-10	<input type="radio"/> 11-100	<input type="radio"/> 101+	Length (inches)	<input type="text"/>	Comments	<input type="text"/>	
Goby?	<input type="text"/>	<input type="radio"/> 1	<input type="radio"/> 2-10	<input type="radio"/> 11-100	<input type="radio"/> 101+	Length (inches)	<input type="text"/>	Comments	<input type="text"/>

Grouper-Gag	<input type="radio"/> 1	<input type="radio"/> 2-10	<input checked="" type="radio"/> 11-100	<input type="radio"/> 101+	Length (inches)	10-28	Comments	<input type="text"/>
Grouper-Goliath	<input type="radio"/> 1	<input type="radio"/> 2-10	<input type="radio"/> 11-100	<input type="radio"/> 101+	Length (inches)	<input type="text"/>	Comments	<input type="text"/>
Grouper-Red	<input type="radio"/> 1	<input type="radio"/> 2-10	<input type="radio"/> 11-100	<input type="radio"/> 101+	Length (inches)	<input type="text"/>	Comments	<input type="text"/>
Grouper-Rock-Hind	<input type="radio"/> 1	<input type="radio"/> 2-10	<input type="radio"/> 11-100	<input type="radio"/> 101+	Length (inches)	<input type="text"/>	Comments	<input type="text"/>
Grouper-Scamp	<input checked="" type="radio"/> 1	<input type="radio"/> 2-10	<input type="radio"/> 11-100	<input type="radio"/> 101+	Length (inches)	4	Comments	<input type="text"/>
Grunt-Tomate	<input type="radio"/> 1	<input type="radio"/> 2-10	<input type="radio"/> 11-100	<input checked="" type="radio"/> 101+	Length (inches)	2	Comments	<input type="text"/>
Grunt-White	<input type="radio"/> 1	<input type="radio"/> 2-10	<input type="radio"/> 11-100	<input type="radio"/> 101+	Length (inches)	<input type="text"/>	Comments	<input type="text"/>
Grunt?	<input type="radio"/> 1	<input type="radio"/> 2-10	<input type="radio"/> 11-100	<input type="radio"/> 101+	Length (inches)	<input type="text"/>	Comments	<input type="text"/>
Jack-Almaco-Lesser-AJ	<input type="radio"/> 1	<input checked="" type="radio"/> 2-10	<input type="radio"/> 11-100	<input type="radio"/> 101+	Length (inches)	18	Comments	<input type="text"/>
Jack-Blue-Runner	<input type="radio"/> 1	<input type="radio"/> 2-10	<input type="radio"/> 11-100	<input type="radio"/> 101+	Length (inches)	<input type="text"/>	Comments	<input type="text"/>
Jack-Greater-Amberjack	<input type="radio"/> 1	<input type="radio"/> 2-10	<input checked="" type="radio"/> 11-100	<input type="radio"/> 101+	Length (inches)	12	Comments	<input type="text"/>
Jack-Lookdown	<input type="radio"/> 1	<input type="radio"/> 2-10	<input type="radio"/> 11-100	<input type="radio"/> 101+	Length (inches)	<input type="text"/>	Comments	<input type="text"/>
Jack-Rainbow-Runner	<input type="radio"/> 1	<input type="radio"/> 2-10	<input type="radio"/> 11-100	<input type="radio"/> 101+	Length (inches)	<input type="text"/>	Comments	<input type="text"/>
Jack-Round-Scad-Cigar-Minnow	<input type="radio"/> 1	<input type="radio"/> 2-10	<input type="radio"/> 11-100	<input checked="" type="radio"/> 101+	Length (inches)	3	Comments	<input type="text"/>
Jack?	<input type="radio"/> 1	<input type="radio"/> 2-10	<input type="radio"/> 11-100	<input type="radio"/> 101+	Length (inches)	<input type="text"/>	Comments	<input type="text"/>
Lizardfish?	<input type="radio"/> 1	<input checked="" type="radio"/> 2-10	<input type="radio"/> 11-100	<input type="radio"/> 101+	Length (inches)	4	Comments	<input type="text"/>
Mackerel-King	<input type="radio"/> 1	<input type="radio"/> 2-10	<input type="radio"/> 11-100	<input type="radio"/> 101+	Length (inches)	<input type="text"/>	Comments	<input type="text"/>
Mackerel-Spanish	<input type="radio"/> 1	<input checked="" type="radio"/> 2-10	<input type="radio"/> 11-100	<input type="radio"/> 101+	Length (inches)	24	Comments	<input type="text"/>
Mahi	<input type="radio"/> 1	<input type="radio"/> 2-10	<input type="radio"/> 11-100	<input type="radio"/> 101+	Length (inches)	<input type="text"/>	Comments	<input type="text"/>
Minnows-Glass-Small-Fry	<input type="radio"/> 1	<input type="radio"/> 2-10	<input type="radio"/> 11-100	<input type="radio"/> 101+	Length (inches)	<input type="text"/>	Comments	<input type="text"/>
Pinfish?	<input type="radio"/> 1	<input type="radio"/> 2-10	<input type="radio"/> 11-100	<input type="radio"/> 101+	Length (inches)	<input type="text"/>	Comments	<input type="text"/>
Porgy-Saucereye	<input type="radio"/> 1	<input checked="" type="radio"/> 2-10	<input type="radio"/> 11-100	<input type="radio"/> 101+	Length (inches)	12	Comments	<input type="text"/>
Porgy-Sheepshead-Porgy	<input checked="" type="radio"/> 1	<input type="radio"/> 2-10	<input type="radio"/> 11-100	<input type="radio"/> 101+	Length (inches)	16	Comments	<input type="text"/>
Porgy-Sheepshead	<input type="radio"/> 1	<input type="radio"/> 2-10	<input type="radio"/> 11-100	<input type="radio"/> 101+	Length (inches)	<input type="text"/>	Comments	<input type="text"/>
Porgy?	<input type="radio"/> 1	<input type="radio"/> 2-10	<input type="radio"/> 11-100	<input type="radio"/> 101+	Length (inches)	<input type="text"/>	Comments	<input type="text"/>
Puffer-Bandtail	<input type="radio"/> 1	<input type="radio"/> 2-10	<input type="radio"/> 11-100	<input type="radio"/> 101+	Length (inches)	<input type="text"/>	Comments	<input type="text"/>
Puffer-Sharpnose	<input type="radio"/> 1	<input type="radio"/> 2-10	<input type="radio"/> 11-100	<input type="radio"/> 101+	Length (inches)	<input type="text"/>	Comments	<input type="text"/>
Puffer?	<input type="radio"/> 1	<input type="radio"/> 2-10	<input type="radio"/> 11-100	<input type="radio"/> 101+	Length (inches)	<input type="text"/>	Comments	<input type="text"/>

Ray?	<input type="text"/>	<input type="radio"/> 1	<input type="radio"/> 2-10	<input type="radio"/> 11-100	<input type="radio"/> 101+	Length (inches)	<input type="text"/>	Comments	<input type="text"/>
Shark?	<input type="text"/>	<input type="radio"/> 1	<input type="radio"/> 2-10	<input type="radio"/> 11-100	<input type="radio"/> 101+	Length (inches)	<input type="text"/>	Comments	<input type="text"/>
Sharksucker-Sharksucker		<input type="radio"/> 1	<input type="radio"/> 2-10	<input type="radio"/> 11-100	<input type="radio"/> 101+	Length (inches)	<input type="text"/>	Comments	<input type="text"/>
Sharksucker-Whitefin		<input type="radio"/> 1	<input type="radio"/> 2-10	<input type="radio"/> 11-100	<input type="radio"/> 101+	Length (inches)	<input type="text"/>	Comments	<input type="text"/>
Sand-Perch		<input type="radio"/> 1	<input type="radio"/> 2-10	<input checked="" type="radio"/> 11-100	<input type="radio"/> 101+	Length (inches)	3	Comments	<input type="text"/>
Seabass-Bank		<input type="radio"/> 1	<input type="radio"/> 2-10	<input type="radio"/> 11-100	<input type="radio"/> 101+	Length (inches)	<input type="text"/>	Comments	<input type="text"/>
Seabass-Belted-Sandfish		<input type="radio"/> 1	<input type="radio"/> 2-10	<input checked="" type="radio"/> 11-100	<input type="radio"/> 101+	Length (inches)	1-2	Comments	<input type="text"/>
Seabass-Black		<input type="radio"/> 1	<input type="radio"/> 2-10	<input type="radio"/> 11-100	<input type="radio"/> 101+	Length (inches)	<input type="text"/>	Comments	<input type="text"/>
Seabass-Pygmy		<input type="radio"/> 1	<input checked="" type="radio"/> 2-10	<input type="radio"/> 11-100	<input type="radio"/> 101+	Length (inches)	1-3	Comments	<input type="text"/>
Seabass?	<input type="text"/>	<input type="radio"/> 1	<input type="radio"/> 2-10	<input type="radio"/> 11-100	<input type="radio"/> 101+	Length (inches)	<input type="text"/>	Comments	<input type="text"/>
Snapper-Gray		<input type="radio"/> 1	<input checked="" type="radio"/> 2-10	<input type="radio"/> 11-100	<input type="radio"/> 101+	Length (inches)	12-14	Comments	<input type="text"/>
Snapper-Lane		<input type="radio"/> 1	<input type="radio"/> 2-10	<input type="radio"/> 11-100	<input type="radio"/> 101+	Length (inches)	<input type="text"/>	Comments	<input type="text"/>
Snapper-Red		<input type="radio"/> 1	<input type="radio"/> 2-10	<input type="radio"/> 11-100	<input type="radio"/> 101+	Length (inches)	<input type="text"/>	Comments	<input type="text"/>
Snapper-Vermillion		<input type="radio"/> 1	<input checked="" type="radio"/> 2-10	<input type="radio"/> 11-100	<input type="radio"/> 101+	Length (inches)	2	Comments	possibly more
Snapper?	<input type="text"/>	<input type="radio"/> 1	<input type="radio"/> 2-10	<input type="radio"/> 11-100	<input type="radio"/> 101+	Length (inches)	<input type="text"/>	Comments	<input type="text"/>
Soapfish-Whitespotted		<input type="radio"/> 1	<input checked="" type="radio"/> 2-10	<input type="radio"/> 11-100	<input type="radio"/> 101+	Length (inches)	6	Comments	<input type="text"/>
Spadefish-Atlantic		<input type="radio"/> 1	<input type="radio"/> 2-10	<input checked="" type="radio"/> 11-100	<input type="radio"/> 101+	Length (inches)	10	Comments	<input type="text"/>
Toadfish-Leopard		<input type="radio"/> 1	<input type="radio"/> 2-10	<input type="radio"/> 11-100	<input type="radio"/> 101+	Length (inches)	<input type="text"/>	Comments	<input type="text"/>
Triggerfish-Gray		<input type="radio"/> 1	<input type="radio"/> 2-10	<input checked="" type="radio"/> 11-100	<input type="radio"/> 101+	Length (inches)	8-16	Comments	<input type="text"/>
Wrasse-Slippery-Dick		<input type="radio"/> 1	<input type="radio"/> 2-10	<input checked="" type="radio"/> 11-100	<input type="radio"/> 101+	Length (inches)	2-4	Comments	<input type="text"/>
Unlisted	Bermuda Chub	<input checked="" type="radio"/> 1	<input type="radio"/> 2-10	<input type="radio"/> 11-100	<input type="radio"/> 101+	Length (inches)	2	Comments	Surface by boat
Unlisted	<input type="text"/>	<input type="radio"/> 1	<input type="radio"/> 2-10	<input type="radio"/> 11-100	<input type="radio"/> 101+	Length (inches)	<input type="text"/>	Comments	<input type="text"/>
Unlisted	<input type="text"/>	<input type="radio"/> 1	<input type="radio"/> 2-10	<input type="radio"/> 11-100	<input type="radio"/> 101+	Length (inches)	<input type="text"/>	Comments	<input type="text"/>
Unlisted	<input type="text"/>	<input type="radio"/> 1	<input type="radio"/> 2-10	<input type="radio"/> 11-100	<input type="radio"/> 101+	Length (inches)	<input type="text"/>	Comments	<input type="text"/>
Unlisted	<input type="text"/>	<input type="radio"/> 1	<input type="radio"/> 2-10	<input type="radio"/> 11-100	<input type="radio"/> 101+	Length (inches)	<input type="text"/>	Comments	<input type="text"/>
Unlisted	<input type="text"/>	<input type="radio"/> 1	<input type="radio"/> 2-10	<input type="radio"/> 11-100	<input type="radio"/> 101+	Length (inches)	<input type="text"/>	Comments	<input type="text"/>
Unlisted	<input type="text"/>	<input type="radio"/> 1	<input type="radio"/> 2-10	<input type="radio"/> 11-100	<input type="radio"/> 101+	Length (inches)	<input type="text"/>	Comments	<input type="text"/>
Unlisted	<input type="text"/>	<input type="radio"/> 1	<input type="radio"/> 2-10	<input type="radio"/> 11-100	<input type="radio"/> 101+	Length (inches)	<input type="text"/>	Comments	<input type="text"/>

Growth on Reef (Click on the hyper-links below for identification)

Algae	<input checked="" type="radio"/> 1-25% <input type="radio"/> 26-50% <input type="radio"/> 51-75% <input type="radio"/> 76-100%	Size (inches)	<input type="text"/>	Describe	<input type="text"/>
Anemone	<input checked="" type="radio"/> 1-25% <input type="radio"/> 26-50% <input type="radio"/> 51-75% <input type="radio"/> 76-100%	Size (inches)	<input type="text"/>	Describe	<input type="text"/>
Barnacles	<input checked="" type="radio"/> 1-25% <input type="radio"/> 26-50% <input type="radio"/> 51-75% <input type="radio"/> 76-100%	Size (inches)	<input type="text"/>	Describe	<input type="text"/>
Bivalves	<input type="radio"/> 1-25% <input type="radio"/> 26-50% <input type="radio"/> 51-75% <input type="radio"/> 76-100%	Size (inches)	<input type="text"/>	Describe	<input type="text"/>
Coral-Colorful-Sea-Whip	<input type="radio"/> 1-25% <input type="radio"/> 26-50% <input type="radio"/> 51-75% <input type="radio"/> 76-100%	Size (inches)	<input type="text"/>	Describe	<input type="text"/>
Coral-Hard-Unkown	<input type="radio"/> 1-25% <input type="radio"/> 26-50% <input type="radio"/> 51-75% <input type="radio"/> 76-100%	Size (inches)	<input type="text"/>	Describe	<input type="text"/>
Coral-Gorgonian	<input type="radio"/> 1-25% <input type="radio"/> 26-50% <input type="radio"/> 51-75% <input type="radio"/> 76-100%	Size (inches)	<input type="text"/>	Describe	<input type="text"/>
Coral-Occulina	<input type="radio"/> 1-25% <input type="radio"/> 26-50% <input type="radio"/> 51-75% <input type="radio"/> 76-100%	Size (inches)	<input type="text"/>	Describe	<input type="text"/>
Coral-White-Telesto	<input type="radio"/> 1-25% <input type="radio"/> 26-50% <input type="radio"/> 51-75% <input type="radio"/> 76-100%	Size (inches)	<input type="text"/>	Describe	<input type="text"/>
Feather-Duster-Worms	<input type="radio"/> 1-25% <input type="radio"/> 26-50% <input type="radio"/> 51-75% <input type="radio"/> 76-100%	Size (inches)	<input type="text"/>	Describe	<input type="text"/>
Sponges	<input type="radio"/> 1-25% <input type="radio"/> 26-50% <input type="radio"/> 51-75% <input type="radio"/> 76-100%	Size (inches)	<input type="text"/>	Describe	<input type="text"/>
Unlisted <input type="text" value="tunicates"/>	<input checked="" type="radio"/> 1-25% <input type="radio"/> 26-50% <input type="radio"/> 51-75% <input type="radio"/> 76-100%	Size (inches)	<input type="text"/>	Describe	<input type="text"/>

Invertebrates at Reef (Click on the hyper-links below for identification)

Cowry-Spotted-Cyphoma	<input type="radio"/> 1 <input type="radio"/> 2-10 <input type="radio"/> 11-100 <input type="radio"/> 101+	Size (inches)	<input type="text"/>	Comments	<input type="text"/>
Cowry-West-Indian-Simnia	<input type="radio"/> 1 <input type="radio"/> 2-10 <input type="radio"/> 11-100 <input type="radio"/> 101+	Size (inches)	<input type="text"/>	Comments	<input type="text"/>
Crab-Swimming	<input type="radio"/> 1 <input type="radio"/> 2-10 <input type="radio"/> 11-100 <input type="radio"/> 101+	Size (inches)	<input type="text"/>	Comments	<input type="text"/>
Crab-Stareye-Hermit	<input type="radio"/> 1 <input type="radio"/> 2-10 <input type="radio"/> 11-100 <input type="radio"/> 101+	Size (inches)	<input type="text"/>	Comments	<input type="text"/>
Crab-Stone	<input checked="" type="radio"/> 1 <input type="radio"/> 2-10 <input type="radio"/> 11-100 <input type="radio"/> 101+	Size (inches)	<input type="text" value="3"/>	Comments	<input type="text"/>
Crab-Yellowline-Arrow	<input type="radio"/> 1 <input type="radio"/> 2-10 <input checked="" type="radio"/> 11-100 <input type="radio"/> 101+	Size (inches)	<input type="text" value="2-4"/>	Comments	<input type="text"/>
Crab? <input type="text"/>	<input type="radio"/> 1 <input type="radio"/> 2-10 <input type="radio"/> 11-100 <input type="radio"/> 101+	Size (inches)	<input type="text"/>	Comments	<input type="text"/>
Lobster-Shovelnose	<input type="radio"/> 1 <input type="radio"/> 2-10 <input type="radio"/> 11-100 <input type="radio"/> 101+	Size (inches)	<input type="text"/>	Comments	<input type="text"/>
Lobster-Spiny	<input type="radio"/> 1 <input type="radio"/> 2-10 <input type="radio"/> 11-100 <input type="radio"/> 101+	Size (inches)	<input type="text"/>	Comments	<input type="text"/>
Octopus	<input type="radio"/> 1 <input type="radio"/> 2-10 <input type="radio"/> 11-100 <input type="radio"/> 101+	Size (inches)	<input type="text"/>	Comments	<input type="text"/>
Sea-Cucumber	<input type="radio"/> 1 <input type="radio"/> 2-10 <input type="radio"/> 11-100 <input type="radio"/> 101+	Size (inches)	<input type="text"/>	Comments	<input type="text"/>
Sea-Slug	<input type="radio"/> 1 <input type="radio"/> 2-10 <input type="radio"/> 11-100 <input type="radio"/> 101+	Size (inches)	<input type="text"/>	Comments	<input type="text"/>
Sea-Star	<input type="radio"/> 1 <input type="radio"/> 2-10 <input type="radio"/> 11-100 <input type="radio"/> 101+	Size (inches)	<input type="text"/>	Comments	<input type="text"/>
Sea-Urchin	<input type="radio"/> 1 <input type="radio"/> 2-10 <input checked="" type="radio"/> 11-100 <input type="radio"/> 101+	Size (inches)	<input type="text" value="3"/>	Comments	<input type="text"/>

- [Snail-Atlantic-Hairy-Triton](#) 1 2-10 11-100 101+ Size (inches) Comments
- [Snail-Murex](#) 1 2-10 11-100 101+ Size (inches) Comments
- [Snail-Netted-Olive](#) 1 2-10 11-100 101+ Size (inches) Comments
- [Snail-Florida-Horse-Conch](#) 1 2-10 11-100 101+ Size (inches) Comments
- [Unlisted](#) 1 2-10 11-100 101+ Size (inches) Comments

Turtles and Air Breathers/Mammals (Click on the hyper-links below for identification)

- [Turtle-Green](#) 1 2-10 11-100 101+ Size (inches) Comments
- [Turtle-Leatherback](#) 1 2-10 11-100 101+ Size (inches) Comments
- [Turtle-Loggerhead](#) 1 2-10 11-100 101+ Size (inches) Comments
- [Turtle?](#) 1 2-10 11-100 101+ Size (inches) Comments
- [Whale?](#) 1 2-10 11-100 101+ Size (inches) Comments
- [Unlisted](#) 1 2-10 11-100 101+ Size (inches) Comments
- [Unlisted](#) 1 2-10 11-100 101+ Size (inches) Comments
- [Unlisted](#) 1 2-10 11-100 101+ Size (inches) Comments

Other Observations/Photos:

Observations

Tube anemone in sand, 1
 Brittle Starfish in sea urchins - 2, bright orange

- Photos? Yes No Attached? Yes No
- Video? Yes No

Print Form

Submit by E-mail



Image Field



Image Field



Image Field



Image Field



Image Field



Image Field



Image Field



Image Field



Image Field



Image Field



Image Field



Image Field



Image Field



Image Field



Image Field



Image Field



Image Field

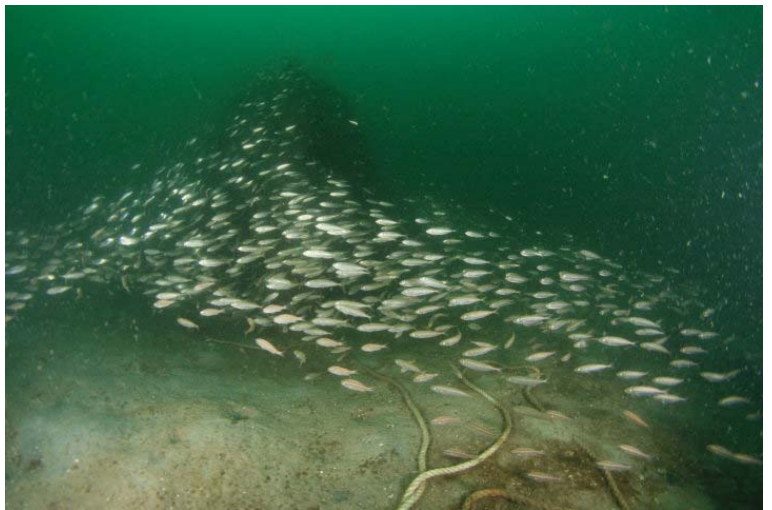


Image Field



Image Field



Image Field

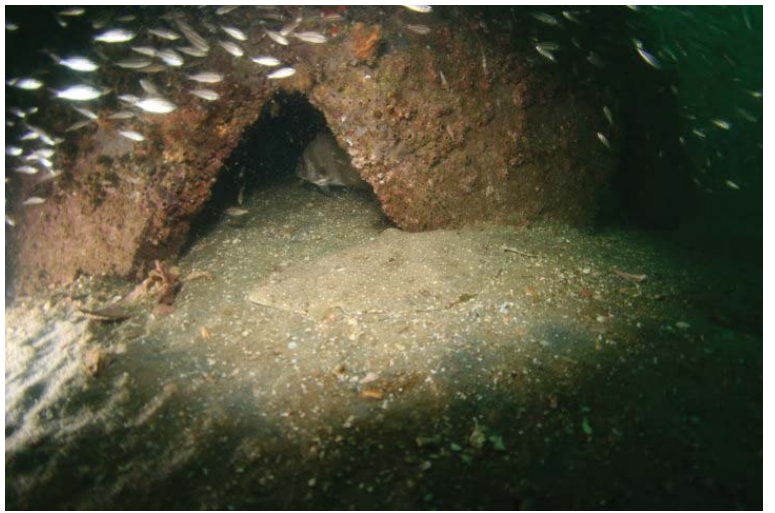
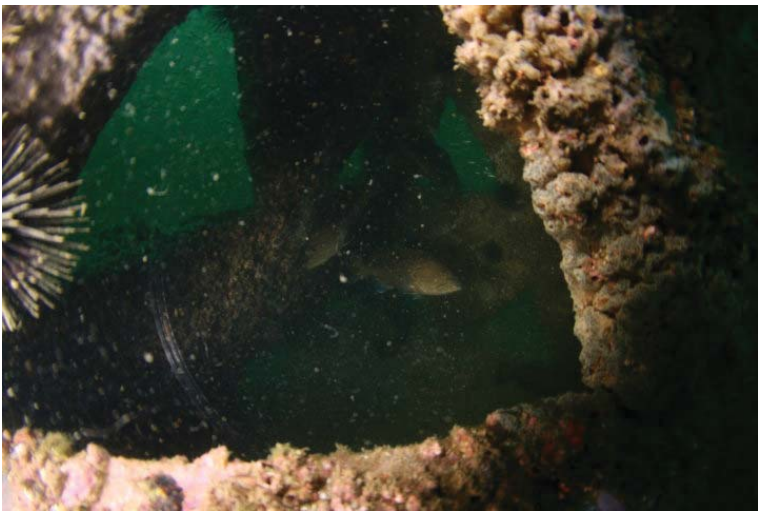


Image Field

Image Field



Image Field

Image Field