

# MBARA Diver's Reef Survey Form

Rev 8 Jun 2011

Clear Form

Reef Number and Name

Latitude  Longitude  Was published lat/lon correct? ☐ Yes ☒ No

GPS Manufacturer & Model:

Sonar Depth (feet)  Survey Date  Time

Weather Conditions  Sea Condition

Boat Name  Boat Captain

Dive Leader

Dive Team Members

Depth Gauge Depth (feet)  Diver Bottom Time (minutes)

Water Temp Surface (Fahrenheit)  Water Temp Bottom (Fahrenheit)

Water Visibility Surface (feet)  Water Visibility Bottom (feet)

Thermocline Depth (feet)  Current Direction  Current Speed (knots)

Other Water Column Characteristics (check all that apply)

☐ Plankton ☐ Algae ☐ Jellyfish ☒ Turbid ☒ Other

Bottom Composition (check all that apply)

☒ Sand ☐ Silt ☐ Mud ☐ Gravel ☐ Shell ☐ Other

Reef Materials & Quantity

Reef Height at Highest Point (measured from base to top of the reef)(feet)

Physical Condition (Durability, stability, storm damage, other damage or movement):

☒ No damage ☐ Minor damage ☐ Moderate damage ☐ Major damage  
☐ No movement ☒ Minor movement ☐ Moderate movement ☐ Major movement

Explain damage/movement and suspected cause

## Fish Counts (Click on the hyper-links below for identification)

<a href="#">Angelfish-Blue</a>	<input type="radio"/> 1	<input type="radio"/> 2-10	<input type="radio"/> 11-100	<input type="radio"/> 101+	Length (inches)	<input type="text"/>	Comments	<input type="text"/>
<a href="#">Angelfish-Queen</a>	<input type="radio"/> 1	<input type="radio"/> 2-10	<input type="radio"/> 11-100	<input type="radio"/> 101+	Length (inches)	<input type="text"/>	Comments	<input type="text"/>
<a href="#">Barracuda-Great</a>	<input type="radio"/> 1	<input type="radio"/> 2-10	<input type="radio"/> 11-100	<input type="radio"/> 101+	Length (inches)	<input type="text"/>	Comments	<input type="text"/>
<a href="#">Barracuda-Guaguanche</a>	<input type="radio"/> 1	<input type="radio"/> 2-10	<input type="radio"/> 11-100	<input type="radio"/> 101+	Length (inches)	<input type="text"/>	Comments	<input type="text"/>
<a href="#">Batfish-Polka-Dot</a>	<input type="radio"/> 1	<input type="radio"/> 2-10	<input type="radio"/> 11-100	<input type="radio"/> 101+	Length (inches)	<input type="text"/>	Comments	<input type="text"/>
<a href="#">Blenny-Molly-Miller</a>	<input type="radio"/> 1	<input type="radio"/> 2-10	<input type="radio"/> 11-100	<input type="radio"/> 101+	Length (inches)	<input type="text"/>	Comments	<input type="text"/>
<a href="#">Blenny-Seaweed</a>	<input type="radio"/> 1	<input type="radio"/> 2-10	<input type="radio"/> 11-100	<input type="radio"/> 101+	Length (inches)	<input type="text"/>	Comments	<input type="text"/>
<a href="#">Blenny-Tessellated</a>	<input type="radio"/> 1	<input type="radio"/> 2-10	<input type="radio"/> 11-100	<input type="radio"/> 101+	Length (inches)	<input type="text"/>	Comments	<input type="text"/>
<a href="#">Blenny?</a>	<input type="text"/>	<input type="radio"/> 1	<input type="radio"/> 2-10	<input checked="" type="radio"/> 11-100	<input type="radio"/> 101+	Length (inches)	1	Comments <input type="text"/>
<a href="#">Butterflyfish-Spotfin</a>	<input type="radio"/> 1	<input type="radio"/> 2-10	<input type="radio"/> 11-100	<input type="radio"/> 101+	Length (inches)	<input type="text"/>	Comments	<input type="text"/>
<a href="#">Butterflyfish?</a>	<input type="text"/>	<input type="radio"/> 1	<input type="radio"/> 2-10	<input type="radio"/> 11-100	<input type="radio"/> 101+	Length (inches)	<input type="text"/>	Comments <input type="text"/>
<a href="#">Cardinalfish-Two-Spot</a>	<input type="radio"/> 1	<input type="radio"/> 2-10	<input type="radio"/> 11-100	<input type="radio"/> 101+	Length (inches)	<input type="text"/>	Comments	<input type="text"/>
<a href="#">Chromis-Purple-Reeffish</a>	<input type="radio"/> 1	<input type="radio"/> 2-10	<input type="radio"/> 11-100	<input type="radio"/> 101+	Length (inches)	<input type="text"/>	Comments	<input type="text"/>
<a href="#">Chromis-Yellowtail-Reeffish</a>	<input type="radio"/> 1	<input type="radio"/> 2-10	<input type="radio"/> 11-100	<input type="radio"/> 101+	Length (inches)	<input type="text"/>	Comments	<input type="text"/>
<a href="#">Cobia (Ling)</a>	<input type="radio"/> 1	<input type="radio"/> 2-10	<input type="radio"/> 11-100	<input type="radio"/> 101+	Length (inches)	<input type="text"/>	Comments	<input type="text"/>
<a href="#">Cowfish-Scrawled</a>	<input type="radio"/> 1	<input type="radio"/> 2-10	<input type="radio"/> 11-100	<input type="radio"/> 101+	Length (inches)	<input type="text"/>	Comments	<input type="text"/>
<a href="#">Damselfish-Cocoa</a>	<input type="radio"/> 1	<input type="radio"/> 2-10	<input type="radio"/> 11-100	<input type="radio"/> 101+	Length (inches)	<input type="text"/>	Comments	<input type="text"/>
<a href="#">Damselfish?</a>	<input type="text"/>	<input type="radio"/> 1	<input checked="" type="radio"/> 2-10	<input type="radio"/> 11-100	<input type="radio"/> 101+	Length (inches)	.5	Comments <input type="text"/>
<a href="#">Dolphin?</a>	<input type="text"/>	<input type="radio"/> 1	<input type="radio"/> 2-10	<input type="radio"/> 11-100	<input type="radio"/> 101+	Length (inches)	<input type="text"/>	Comments <input type="text"/>
<a href="#">Drum-Cubbyu</a>	<input type="radio"/> 1	<input checked="" type="radio"/> 2-10	<input type="radio"/> 11-100	<input type="radio"/> 101+	Length (inches)	.25-1	Comments <input type="text"/>	
<a href="#">Drum-Jackknifefish</a>	<input type="radio"/> 1	<input type="radio"/> 2-10	<input type="radio"/> 11-100	<input type="radio"/> 101+	Length (inches)	<input type="text"/>	Comments	<input type="text"/>
<a href="#">Eel?</a>	<input type="text"/>	<input type="radio"/> 1	<input type="radio"/> 2-10	<input type="radio"/> 11-100	<input type="radio"/> 101+	Length (inches)	<input type="text"/>	Comments <input type="text"/>
<a href="#">Flounder-Gulf</a>	<input type="radio"/> 1	<input type="radio"/> 2-10	<input type="radio"/> 11-100	<input type="radio"/> 101+	Length (inches)	<input type="text"/>	Comments	<input type="text"/>
<a href="#">Filefish?</a>	<input type="text"/>	<input type="radio"/> 1	<input type="radio"/> 2-10	<input type="radio"/> 11-100	<input type="radio"/> 101+	Length (inches)	<input type="text"/>	Comments <input type="text"/>
<a href="#">Frogfish-Ocellated</a>	<input checked="" type="radio"/> 1	<input type="radio"/> 2-10	<input type="radio"/> 11-100	<input type="radio"/> 101+	Length (inches)	2	Comments	<input type="text"/>
<a href="#">Goby-Spotted</a>	<input type="radio"/> 1	<input type="radio"/> 2-10	<input type="radio"/> 11-100	<input type="radio"/> 101+	Length (inches)	<input type="text"/>	Comments	<input type="text"/>
<a href="#">Goby?</a>	<input type="text"/>	<input type="radio"/> 1	<input type="radio"/> 2-10	<input type="radio"/> 11-100	<input type="radio"/> 101+	Length (inches)	<input type="text"/>	Comments <input type="text"/>

<a href="#">Grouper-Gag</a>	<input type="radio"/> 1	<input type="radio"/> 2-10	<input checked="" type="radio"/> 11-100	<input type="radio"/> 101+	Length (inches)	<input type="text" value="12-24"/>	Comments	<input type="text"/>
<a href="#">Grouper-Goliath</a>	<input type="radio"/> 1	<input type="radio"/> 2-10	<input type="radio"/> 11-100	<input type="radio"/> 101+	Length (inches)	<input type="text"/>	Comments	<input type="text"/>
<a href="#">Grouper-Red</a>	<input type="radio"/> 1	<input type="radio"/> 2-10	<input type="radio"/> 11-100	<input type="radio"/> 101+	Length (inches)	<input type="text"/>	Comments	<input type="text"/>
<a href="#">Grouper-Rock-Hind</a>	<input type="radio"/> 1	<input type="radio"/> 2-10	<input type="radio"/> 11-100	<input type="radio"/> 101+	Length (inches)	<input type="text"/>	Comments	<input type="text"/>
<a href="#">Grouper-Scamp</a>	<input type="radio"/> 1	<input type="radio"/> 2-10	<input type="radio"/> 11-100	<input type="radio"/> 101+	Length (inches)	<input type="text"/>	Comments	<input type="text"/>
<a href="#">Grunt-Tomate</a>	<input type="radio"/> 1	<input type="radio"/> 2-10	<input type="radio"/> 11-100	<input checked="" type="radio"/> 101+	Length (inches)	<input type="text" value="1"/>	Comments	<input type="text"/>
<a href="#">Grunt-White</a>	<input type="radio"/> 1	<input type="radio"/> 2-10	<input type="radio"/> 11-100	<input type="radio"/> 101+	Length (inches)	<input type="text"/>	Comments	<input type="text"/>
<a href="#">Grunt?</a>	<input type="text"/>	<input type="radio"/> 1	<input type="radio"/> 2-10	<input type="radio"/> 11-100	<input type="radio"/> 101+	Length (inches)	<input type="text"/>	Comments
<a href="#">Jack-Almaco-Lesser-AJ</a>	<input type="radio"/> 1	<input type="radio"/> 2-10	<input type="radio"/> 11-100	<input type="radio"/> 101+	Length (inches)	<input type="text"/>	Comments	<input type="text"/>
<a href="#">Jack-Blue-Runner</a>	<input type="radio"/> 1	<input type="radio"/> 2-10	<input type="radio"/> 11-100	<input type="radio"/> 101+	Length (inches)	<input type="text"/>	Comments	<input type="text"/>
<a href="#">Jack-Greater-Amberjack</a>	<input type="radio"/> 1	<input type="radio"/> 2-10	<input checked="" type="radio"/> 11-100	<input type="radio"/> 101+	Length (inches)	<input type="text" value="11"/>	Comments	<input type="text"/>
<a href="#">Jack-Lookdown</a>	<input type="radio"/> 1	<input type="radio"/> 2-10	<input type="radio"/> 11-100	<input type="radio"/> 101+	Length (inches)	<input type="text"/>	Comments	<input type="text"/>
<a href="#">Jack-Rainbow-Runner</a>	<input type="radio"/> 1	<input type="radio"/> 2-10	<input type="radio"/> 11-100	<input type="radio"/> 101+	Length (inches)	<input type="text"/>	Comments	<input type="text"/>
<a href="#">Jack-Round-Scad-Cigar-Minnow</a>	<input type="radio"/> 1	<input type="radio"/> 2-10	<input checked="" type="radio"/> 11-100	<input type="radio"/> 101+	Length (inches)	<input type="text" value="1"/>	Comments	<input type="text"/>
<a href="#">Jack?</a>	<input type="text"/>	<input type="radio"/> 1	<input type="radio"/> 2-10	<input type="radio"/> 11-100	<input type="radio"/> 101+	Length (inches)	<input type="text"/>	Comments
<a href="#">Lizardfish?</a>	<input type="text"/>	<input type="radio"/> 1	<input type="radio"/> 2-10	<input type="radio"/> 11-100	<input type="radio"/> 101+	Length (inches)	<input type="text"/>	Comments
<a href="#">Mackerel-King</a>	<input type="radio"/> 1	<input type="radio"/> 2-10	<input type="radio"/> 11-100	<input type="radio"/> 101+	Length (inches)	<input type="text"/>	Comments	<input type="text"/>
<a href="#">Mackerel-Spanish</a>	<input checked="" type="radio"/> 1	<input type="radio"/> 2-10	<input type="radio"/> 11-100	<input type="radio"/> 101+	Length (inches)	<input type="text" value="12"/>	Comments	<input type="text"/>
<a href="#">Mahi</a>	<input type="radio"/> 1	<input type="radio"/> 2-10	<input type="radio"/> 11-100	<input type="radio"/> 101+	Length (inches)	<input type="text"/>	Comments	<input type="text"/>
<a href="#">Minnows-Glass-Small-Fry</a>	<input type="radio"/> 1	<input type="radio"/> 2-10	<input type="radio"/> 11-100	<input checked="" type="radio"/> 101+	Length (inches)	<input type="text" value="1"/>	Comments	<input type="text"/>
<a href="#">Pinfish?</a>	<input type="text"/>	<input type="radio"/> 1	<input type="radio"/> 2-10	<input type="radio"/> 11-100	<input type="radio"/> 101+	Length (inches)	<input type="text"/>	Comments
<a href="#">Porgy-Saucereye</a>	<input type="radio"/> 1	<input type="radio"/> 2-10	<input type="radio"/> 11-100	<input type="radio"/> 101+	Length (inches)	<input type="text"/>	Comments	<input type="text"/>
<a href="#">Porgy-Sheepshead-Porgy</a>	<input type="radio"/> 1	<input type="radio"/> 2-10	<input type="radio"/> 11-100	<input type="radio"/> 101+	Length (inches)	<input type="text"/>	Comments	<input type="text"/>
<a href="#">Porgy-Sheepshead</a>	<input type="radio"/> 1	<input type="radio"/> 2-10	<input type="radio"/> 11-100	<input type="radio"/> 101+	Length (inches)	<input type="text"/>	Comments	<input type="text"/>
<a href="#">Porgy?</a>	<input type="text"/>	<input type="radio"/> 1	<input type="radio"/> 2-10	<input type="radio"/> 11-100	<input type="radio"/> 101+	Length (inches)	<input type="text"/>	Comments
<a href="#">Puffer-Bandtail</a>	<input type="radio"/> 1	<input type="radio"/> 2-10	<input type="radio"/> 11-100	<input type="radio"/> 101+	Length (inches)	<input type="text"/>	Comments	<input type="text"/>
<a href="#">Puffer-Sharpnose</a>	<input type="radio"/> 1	<input type="radio"/> 2-10	<input type="radio"/> 11-100	<input type="radio"/> 101+	Length (inches)	<input type="text"/>	Comments	<input type="text"/>
<a href="#">Puffer?</a>	<input type="text"/>	<input type="radio"/> 1	<input type="radio"/> 2-10	<input type="radio"/> 11-100	<input type="radio"/> 101+	Length (inches)	<input type="text"/>	Comments

<a href="#">Ray?</a>	<input type="text"/>	<input type="radio"/> 1	<input type="radio"/> 2-10	<input type="radio"/> 11-100	<input type="radio"/> 101+	Length (inches)	<input type="text"/>	Comments	<input type="text"/>
<a href="#">Shark?</a>	<input type="text" value="Nurse"/>	<input checked="" type="radio"/> 1	<input type="radio"/> 2-10	<input type="radio"/> 11-100	<input type="radio"/> 101+	Length (inches)	<input type="text" value="54"/>	Comments	<input type="text"/>
<a href="#">Sharksucker-Sharksucker</a>		<input type="radio"/> 1	<input type="radio"/> 2-10	<input type="radio"/> 11-100	<input type="radio"/> 101+	Length (inches)	<input type="text"/>	Comments	<input type="text"/>
<a href="#">Sharksucker-Whitefin</a>		<input type="radio"/> 1	<input type="radio"/> 2-10	<input type="radio"/> 11-100	<input type="radio"/> 101+	Length (inches)	<input type="text"/>	Comments	<input type="text"/>
<a href="#">Sand-Perch</a>		<input checked="" type="radio"/> 1	<input type="radio"/> 2-10	<input type="radio"/> 11-100	<input type="radio"/> 101+	Length (inches)	<input type="text" value="2"/>	Comments	<input type="text"/>
<a href="#">Seabass-Bank</a>		<input type="radio"/> 1	<input type="radio"/> 2-10	<input type="radio"/> 11-100	<input type="radio"/> 101+	Length (inches)	<input type="text"/>	Comments	<input type="text"/>
<a href="#">Seabass-Belted-Sandfish</a>		<input type="radio"/> 1	<input checked="" type="radio"/> 2-10	<input type="radio"/> 11-100	<input type="radio"/> 101+	Length (inches)	<input type="text" value="1"/>	Comments	<input type="text"/>
<a href="#">Seabass-Black</a>		<input type="radio"/> 1	<input type="radio"/> 2-10	<input type="radio"/> 11-100	<input type="radio"/> 101+	Length (inches)	<input type="text"/>	Comments	<input type="text"/>
<a href="#">Seabass-Pygmy</a>		<input type="radio"/> 1	<input type="radio"/> 2-10	<input type="radio"/> 11-100	<input type="radio"/> 101+	Length (inches)	<input type="text"/>	Comments	<input type="text"/>
<a href="#">Seabass?</a>	<input type="text"/>	<input type="radio"/> 1	<input type="radio"/> 2-10	<input type="radio"/> 11-100	<input type="radio"/> 101+	Length (inches)	<input type="text"/>	Comments	<input type="text"/>
<a href="#">Snapper-Gray</a>		<input type="radio"/> 1	<input type="radio"/> 2-10	<input type="radio"/> 11-100	<input type="radio"/> 101+	Length (inches)	<input type="text"/>	Comments	<input type="text"/>
<a href="#">Snapper-Lane</a>		<input type="radio"/> 1	<input type="radio"/> 2-10	<input type="radio"/> 11-100	<input type="radio"/> 101+	Length (inches)	<input type="text"/>	Comments	<input type="text"/>
<a href="#">Snapper-Red</a>		<input type="radio"/> 1	<input type="radio"/> 2-10	<input type="radio"/> 11-100	<input type="radio"/> 101+	Length (inches)	<input type="text"/>	Comments	<input type="text"/>
<a href="#">Snapper-Vermillion</a>		<input type="radio"/> 1	<input type="radio"/> 2-10	<input type="radio"/> 11-100	<input type="radio"/> 101+	Length (inches)	<input type="text"/>	Comments	<input type="text"/>
<a href="#">Snapper?</a>	<input type="text"/>	<input type="radio"/> 1	<input type="radio"/> 2-10	<input type="radio"/> 11-100	<input type="radio"/> 101+	Length (inches)	<input type="text"/>	Comments	<input type="text"/>
<a href="#">Soapfish-Whitespotted</a>		<input type="radio"/> 1	<input checked="" type="radio"/> 2-10	<input type="radio"/> 11-100	<input type="radio"/> 101+	Length (inches)	<input type="text" value="6"/>	Comments	<input type="text"/>
<a href="#">Spadefish-Atlantic</a>		<input type="radio"/> 1	<input type="radio"/> 2-10	<input checked="" type="radio"/> 11-100	<input type="radio"/> 101+	Length (inches)	<input type="text" value="8"/>	Comments	<input type="text"/>
<a href="#">Toadfish-Leopard</a>		<input type="radio"/> 1	<input type="radio"/> 2-10	<input type="radio"/> 11-100	<input type="radio"/> 101+	Length (inches)	<input type="text"/>	Comments	<input type="text"/>
<a href="#">Triggerfish-Gray</a>		<input type="radio"/> 1	<input type="radio"/> 2-10	<input type="radio"/> 11-100	<input type="radio"/> 101+	Length (inches)	<input type="text"/>	Comments	<input type="text"/>
<a href="#">Wrasse-Slippery-Dick</a>		<input type="radio"/> 1	<input type="radio"/> 2-10	<input type="radio"/> 11-100	<input type="radio"/> 101+	Length (inches)	<input type="text"/>	Comments	<input type="text"/>
<a href="#">Unlisted</a>	<input type="text"/>	<input type="radio"/> 1	<input type="radio"/> 2-10	<input type="radio"/> 11-100	<input type="radio"/> 101+	Length (inches)	<input type="text"/>	Comments	<input type="text"/>
<a href="#">Unlisted</a>	<input type="text"/>	<input type="radio"/> 1	<input type="radio"/> 2-10	<input type="radio"/> 11-100	<input type="radio"/> 101+	Length (inches)	<input type="text"/>	Comments	<input type="text"/>
<a href="#">Unlisted</a>	<input type="text"/>	<input type="radio"/> 1	<input type="radio"/> 2-10	<input type="radio"/> 11-100	<input type="radio"/> 101+	Length (inches)	<input type="text"/>	Comments	<input type="text"/>
<a href="#">Unlisted</a>	<input type="text"/>	<input type="radio"/> 1	<input type="radio"/> 2-10	<input type="radio"/> 11-100	<input type="radio"/> 101+	Length (inches)	<input type="text"/>	Comments	<input type="text"/>
<a href="#">Unlisted</a>	<input type="text"/>	<input type="radio"/> 1	<input type="radio"/> 2-10	<input type="radio"/> 11-100	<input type="radio"/> 101+	Length (inches)	<input type="text"/>	Comments	<input type="text"/>
<a href="#">Unlisted</a>	<input type="text"/>	<input type="radio"/> 1	<input type="radio"/> 2-10	<input type="radio"/> 11-100	<input type="radio"/> 101+	Length (inches)	<input type="text"/>	Comments	<input type="text"/>
<a href="#">Unlisted</a>	<input type="text"/>	<input type="radio"/> 1	<input type="radio"/> 2-10	<input type="radio"/> 11-100	<input type="radio"/> 101+	Length (inches)	<input type="text"/>	Comments	<input type="text"/>
<a href="#">Unlisted</a>	<input type="text"/>	<input type="radio"/> 1	<input type="radio"/> 2-10	<input type="radio"/> 11-100	<input type="radio"/> 101+	Length (inches)	<input type="text"/>	Comments	<input type="text"/>

## Growth on Reef (Click on the hyper-links below for identification)

<a href="#">Algae</a>	<input type="radio"/> 1-25% <input checked="" type="radio"/> 26-50% <input type="radio"/> 51-75% <input type="radio"/> 76-100%	Size (inches)	<input type="text" value="2"/>	Describe	<input type="text" value="reddish"/>
<a href="#">Anemone</a>	<input checked="" type="radio"/> 1-25% <input type="radio"/> 26-50% <input type="radio"/> 51-75% <input type="radio"/> 76-100%	Size (inches)	<input type="text" value="1"/>	Describe	<input type="text"/>
<a href="#">Barnacles</a>	<input checked="" type="radio"/> 1-25% <input type="radio"/> 26-50% <input type="radio"/> 51-75% <input type="radio"/> 76-100%	Size (inches)	<input type="text" value="1"/>	Describe	<input type="text"/>
<a href="#">Bivalves</a>	<input type="radio"/> 1-25% <input type="radio"/> 26-50% <input type="radio"/> 51-75% <input type="radio"/> 76-100%	Size (inches)	<input type="text"/>	Describe	<input type="text"/>
<a href="#">Coral-Colorful-Sea-Whip</a>	<input type="radio"/> 1-25% <input type="radio"/> 26-50% <input type="radio"/> 51-75% <input type="radio"/> 76-100%	Size (inches)	<input type="text"/>	Describe	<input type="text"/>
<a href="#">Coral-Hard-Unkown</a>	<input type="radio"/> 1-25% <input type="radio"/> 26-50% <input type="radio"/> 51-75% <input type="radio"/> 76-100%	Size (inches)	<input type="text"/>	Describe	<input type="text"/>
<a href="#">Coral-Gorgonian</a>	<input type="radio"/> 1-25% <input type="radio"/> 26-50% <input type="radio"/> 51-75% <input type="radio"/> 76-100%	Size (inches)	<input type="text"/>	Describe	<input type="text"/>
<a href="#">Coral-Occulina</a>	<input type="radio"/> 1-25% <input type="radio"/> 26-50% <input type="radio"/> 51-75% <input type="radio"/> 76-100%	Size (inches)	<input type="text"/>	Describe	<input type="text"/>
<a href="#">Coral-White-Telesto</a>	<input type="radio"/> 1-25% <input type="radio"/> 26-50% <input type="radio"/> 51-75% <input type="radio"/> 76-100%	Size (inches)	<input type="text"/>	Describe	<input type="text"/>
<a href="#">Feather-Duster-Worms</a>	<input type="radio"/> 1-25% <input type="radio"/> 26-50% <input type="radio"/> 51-75% <input type="radio"/> 76-100%	Size (inches)	<input type="text"/>	Describe	<input type="text"/>
<a href="#">Sponges</a>	<input type="radio"/> 1-25% <input type="radio"/> 26-50% <input type="radio"/> 51-75% <input type="radio"/> 76-100%	Size (inches)	<input type="text"/>	Describe	<input type="text"/>
<a href="#">Unlisted</a>	<input type="text"/>	<input type="radio"/> 1-25% <input type="radio"/> 26-50% <input type="radio"/> 51-75% <input type="radio"/> 76-100%	Size (inches)	<input type="text"/>	Describe <input type="text"/>

## Invertebrates at Reef (Click on the hyper-links below for identification)

<a href="#">Cowry-Spotted-Cyphoma</a>	<input type="radio"/> 1 <input type="radio"/> 2-10 <input type="radio"/> 11-100 <input type="radio"/> 101+	Size (inches)	<input type="text"/>	Comments	<input type="text"/>
<a href="#">Cowry-West-Indian-Simnia</a>	<input type="radio"/> 1 <input type="radio"/> 2-10 <input type="radio"/> 11-100 <input type="radio"/> 101+	Size (inches)	<input type="text"/>	Comments	<input type="text"/>
<a href="#">Crab-Swimming</a>	<input type="radio"/> 1 <input type="radio"/> 2-10 <input type="radio"/> 11-100 <input type="radio"/> 101+	Size (inches)	<input type="text"/>	Comments	<input type="text"/>
<a href="#">Crab-Stareye-Hermit</a>	<input type="radio"/> 1 <input type="radio"/> 2-10 <input type="radio"/> 11-100 <input type="radio"/> 101+	Size (inches)	<input type="text"/>	Comments	<input type="text"/>
<a href="#">Crab-Stone</a>	<input type="radio"/> 1 <input type="radio"/> 2-10 <input type="radio"/> 11-100 <input type="radio"/> 101+	Size (inches)	<input type="text"/>	Comments	<input type="text"/>
<a href="#">Crab-Yellowline-Arrow</a>	<input type="radio"/> 1 <input type="radio"/> 2-10 <input type="radio"/> 11-100 <input type="radio"/> 101+	Size (inches)	<input type="text"/>	Comments	<input type="text"/>
<a href="#">Crab?</a>	<input type="text" value="hermit crabs"/>	<input type="radio"/> 1 <input checked="" type="radio"/> 2-10 <input type="radio"/> 11-100 <input type="radio"/> 101+	Size (inches)	<input type="text" value="1"/>	Comments <input type="text"/>
<a href="#">Lobster-Shovelnose</a>	<input type="radio"/> 1 <input type="radio"/> 2-10 <input type="radio"/> 11-100 <input type="radio"/> 101+	Size (inches)	<input type="text"/>	Comments	<input type="text"/>
<a href="#">Lobster-Spiny</a>	<input type="radio"/> 1 <input type="radio"/> 2-10 <input type="radio"/> 11-100 <input type="radio"/> 101+	Size (inches)	<input type="text"/>	Comments	<input type="text"/>
<a href="#">Octopus</a>	<input type="radio"/> 1 <input type="radio"/> 2-10 <input type="radio"/> 11-100 <input type="radio"/> 101+	Size (inches)	<input type="text"/>	Comments	<input type="text"/>
<a href="#">Sea-Cucumber</a>	<input type="radio"/> 1 <input type="radio"/> 2-10 <input type="radio"/> 11-100 <input type="radio"/> 101+	Size (inches)	<input type="text"/>	Comments	<input type="text"/>
<a href="#">Sea-Slug</a>	<input type="radio"/> 1 <input type="radio"/> 2-10 <input type="radio"/> 11-100 <input type="radio"/> 101+	Size (inches)	<input type="text"/>	Comments	<input type="text"/>
<a href="#">Sea-Star</a>	<input type="radio"/> 1 <input type="radio"/> 2-10 <input type="radio"/> 11-100 <input type="radio"/> 101+	Size (inches)	<input type="text"/>	Comments	<input type="text"/>
<a href="#">Sea-Urchin</a>	<input type="radio"/> 1 <input type="radio"/> 2-10 <input type="radio"/> 11-100 <input type="radio"/> 101+	Size (inches)	<input type="text"/>	Comments	<input type="text"/>

<a href="#">Snail-Atlantic-Hairy-Triton</a>	<input type="radio"/> 1	<input type="radio"/> 2-10	<input type="radio"/> 11-100	<input type="radio"/> 101+	Size (inches)	<input type="text"/>	Comments	<input type="text"/>
<a href="#">Snail-Murex</a>	<input type="radio"/> 1	<input type="radio"/> 2-10	<input type="radio"/> 11-100	<input type="radio"/> 101+	Size (inches)	<input type="text"/>	Comments	<input type="text"/>
<a href="#">Snail-Netted-Olive</a>	<input type="radio"/> 1	<input checked="" type="radio"/> 2-10	<input type="radio"/> 11-100	<input type="radio"/> 101+	Size (inches)	<input type="text" value="2"/>	Comments	<input type="text"/>
<a href="#">Snail-Florida-Horse-Conch</a>	<input type="radio"/> 1	<input type="radio"/> 2-10	<input type="radio"/> 11-100	<input type="radio"/> 101+	Size (inches)	<input type="text"/>	Comments	<input type="text"/>
<a href="#">Unlisted</a> <input type="text" value="snails"/>	<input type="radio"/> 1	<input checked="" type="radio"/> 2-10	<input type="radio"/> 11-100	<input type="radio"/> 101+	Size (inches)	<input type="text" value="1"/>	Comments	<input type="text"/>

## Turtles and Air Breathers/Mammals (Click on the hyper-links below for identification)

<a href="#">Turtle-Green</a>	<input type="radio"/> 1	<input type="radio"/> 2-10	<input type="radio"/> 11-100	<input type="radio"/> 101+	Size (inches)	<input type="text"/>	Comments	<input type="text"/>
<a href="#">Turtle-Leatherback</a>	<input type="radio"/> 1	<input type="radio"/> 2-10	<input type="radio"/> 11-100	<input type="radio"/> 101+	Size (inches)	<input type="text"/>	Comments	<input type="text"/>
<a href="#">Turtle-Loggerhead</a>	<input type="radio"/> 1	<input type="radio"/> 2-10	<input type="radio"/> 11-100	<input type="radio"/> 101+	Size (inches)	<input type="text"/>	Comments	<input type="text"/>
<a href="#">Turtle?</a> <input type="text"/>	<input type="radio"/> 1	<input type="radio"/> 2-10	<input type="radio"/> 11-100	<input type="radio"/> 101+	Size (inches)	<input type="text"/>	Comments	<input type="text"/>
<a href="#">Whale?</a> <input type="text"/>	<input type="radio"/> 1	<input type="radio"/> 2-10	<input type="radio"/> 11-100	<input type="radio"/> 101+	Size (inches)	<input type="text"/>	Comments	<input type="text"/>
<a href="#">Unlisted</a> <input type="text"/>	<input type="radio"/> 1	<input type="radio"/> 2-10	<input type="radio"/> 11-100	<input type="radio"/> 101+	Size (inches)	<input type="text"/>	Comments	<input type="text"/>
<a href="#">Unlisted</a> <input type="text"/>	<input type="radio"/> 1	<input type="radio"/> 2-10	<input type="radio"/> 11-100	<input type="radio"/> 101+	Size (inches)	<input type="text"/>	Comments	<input type="text"/>
<a href="#">Unlisted</a> <input type="text"/>	<input type="radio"/> 1	<input type="radio"/> 2-10	<input type="radio"/> 11-100	<input type="radio"/> 101+	Size (inches)	<input type="text"/>	Comments	<input type="text"/>

## Other Observations/Photos:

Observations

Repeatedly, Bell Shoals sites appear to hold large numbers of Gag Grouper. This shallow area may be an important transition zone.

Photos? ☒ Yes ☐ No      Attached? ☒ Yes ☐ No

Video? ☐ Yes ☒ No

[Print Form](#)

[Submit by E-mail](#)





Image Field

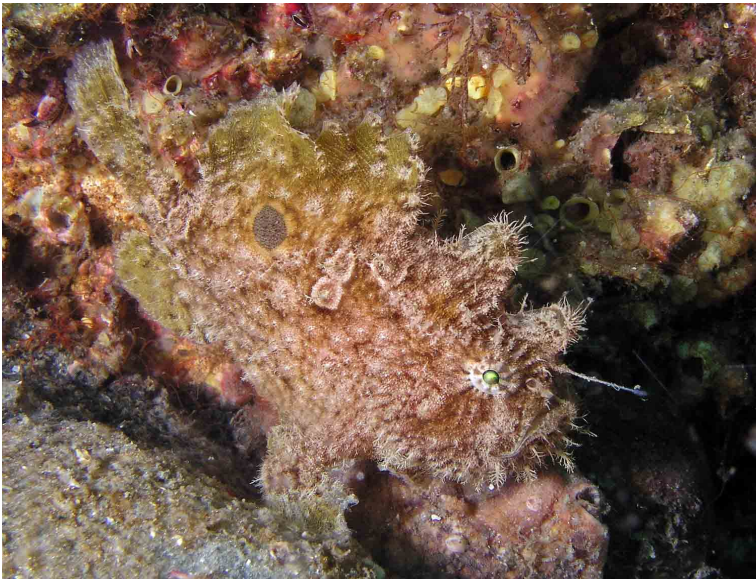


Image Field



Image Field



Image Field



Image Field



Image Field





Image Field



Image Field



Image Field



Image Field



Image Field



Image Field





Image Field

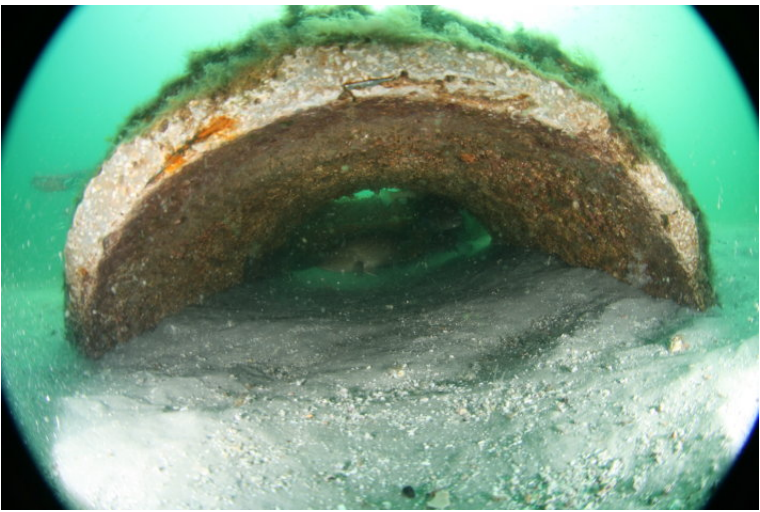


Image Field

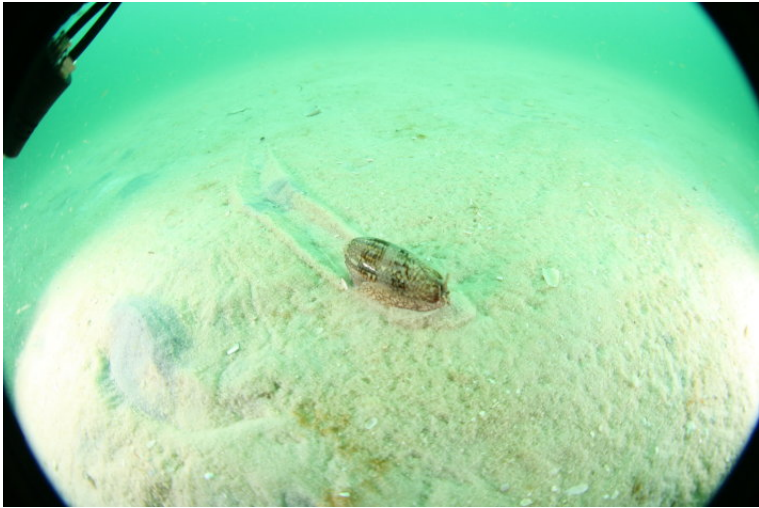


Image Field



Image Field



Image Field



Image Field

Image Field

Image Field

Image Field

Image Field

Image Field

Image Field