

# MBARA Diver's Reef Survey Form Rev 8 Jun 2011

Clear Form

Reef Number and Name

Latitude  Longitude  Was published lat/lon correct?  Yes  No

GPS Manufacturer & Model:

Sonar Depth (feet)  Survey Date  Time

Weather Conditions  Sea Condition

Boat Name  Boat Captain

Dive Leader

Dive Team Members

Depth Gauge Depth (feet)  Diver Bottom Time (minutes)

Water Temp Surface (Fahrenheit)  Water Temp Bottom (Fahrenheit)

Water Visibility Surface (feet)  Water Visibility Bottom (feet)

Thermocline Depth (feet)  Current Direction  Current Speed (knots)

Other Water Column Characteristics (check all that apply)

Plankton  Algae  Jellyfish  Turbid  Other

Bottom Composition (check all that apply)

Sand  Silt  Mud  Gravel  Shell  Other

Reef Materials & Quantity

Reef Height at Highest Point (measured from base to top of the reef)(feet)

Physical Condition (Durability, stability, storm damage, other damage or movement):

No damage  Minor damage  Moderate damage  Major damage  
 No movement  Minor movement  Moderate movement  Major movement

Explain damage/movement and suspected cause

## Fish Counts (Click on the hyper-links below for identification)

<a href="#">Angelfish-Blue</a>	<input type="radio"/> 1	<input checked="" type="radio"/> 2-10	<input type="radio"/> 11-100	<input type="radio"/> 101+	Length (inches)	<input type="text" value="15"/>	Comments	<input type="text"/>	
<a href="#">Angelfish-Queen</a>	<input type="radio"/> 1	<input type="radio"/> 2-10	<input type="radio"/> 11-100	<input type="radio"/> 101+	Length (inches)	<input type="text"/>	Comments	<input type="text"/>	
<a href="#">Barracuda-Great</a>	<input type="radio"/> 1	<input type="radio"/> 2-10	<input type="radio"/> 11-100	<input type="radio"/> 101+	Length (inches)	<input type="text"/>	Comments	<input type="text"/>	
<a href="#">Barracuda-Guaguanche</a>	<input type="radio"/> 1	<input type="radio"/> 2-10	<input type="radio"/> 11-100	<input type="radio"/> 101+	Length (inches)	<input type="text"/>	Comments	<input type="text"/>	
<a href="#">Batfish-Polka-Dot</a>	<input type="radio"/> 1	<input type="radio"/> 2-10	<input type="radio"/> 11-100	<input type="radio"/> 101+	Length (inches)	<input type="text"/>	Comments	<input type="text"/>	
<a href="#">Blenny-Molly-Miller</a>	<input type="radio"/> 1	<input type="radio"/> 2-10	<input type="radio"/> 11-100	<input type="radio"/> 101+	Length (inches)	<input type="text"/>	Comments	<input type="text"/>	
<a href="#">Blenny-Seaweed</a>	<input type="radio"/> 1	<input checked="" type="radio"/> 2-10	<input type="radio"/> 11-100	<input type="radio"/> 101+	Length (inches)	<input type="text" value="2"/>	Comments	<input type="text"/>	
<a href="#">Blenny-Tessellated</a>	<input type="radio"/> 1	<input type="radio"/> 2-10	<input type="radio"/> 11-100	<input type="radio"/> 101+	Length (inches)	<input type="text"/>	Comments	<input type="text"/>	
<a href="#">Blenny?</a>	<input type="text"/>	<input type="radio"/> 1	<input type="radio"/> 2-10	<input type="radio"/> 11-100	<input type="radio"/> 101+	Length (inches)	<input type="text"/>	Comments	<input type="text"/>
<a href="#">Butterflyfish-Spotfin</a>	<input type="radio"/> 1	<input checked="" type="radio"/> 2-10	<input type="radio"/> 11-100	<input type="radio"/> 101+	Length (inches)	<input type="text" value="2"/>	Comments	<input type="text"/>	
<a href="#">Butterflyfish?</a>	<input type="text"/>	<input type="radio"/> 1	<input type="radio"/> 2-10	<input type="radio"/> 11-100	<input type="radio"/> 101+	Length (inches)	<input type="text"/>	Comments	<input type="text"/>
<a href="#">Cardinalfish-Two-Spot</a>	<input type="radio"/> 1	<input type="radio"/> 2-10	<input checked="" type="radio"/> 11-100	<input type="radio"/> 101+	Length (inches)	<input type="text" value="2"/>	Comments	<input type="text"/>	
<a href="#">Chromis-Purple-Reeffish</a>	<input type="radio"/> 1	<input type="radio"/> 2-10	<input type="radio"/> 11-100	<input type="radio"/> 101+	Length (inches)	<input type="text"/>	Comments	<input type="text"/>	
<a href="#">Chromis-Yellowtail-Reeffish</a>	<input type="radio"/> 1	<input type="radio"/> 2-10	<input type="radio"/> 11-100	<input type="radio"/> 101+	Length (inches)	<input type="text"/>	Comments	<input type="text"/>	
<a href="#">Cobia (Ling)</a>	<input type="radio"/> 1	<input type="radio"/> 2-10	<input type="radio"/> 11-100	<input type="radio"/> 101+	Length (inches)	<input type="text"/>	Comments	<input type="text"/>	
<a href="#">Cowfish-Scrawled</a>	<input type="radio"/> 1	<input type="radio"/> 2-10	<input type="radio"/> 11-100	<input type="radio"/> 101+	Length (inches)	<input type="text"/>	Comments	<input type="text"/>	
<a href="#">Damsel fish-Cocoa</a>	<input type="radio"/> 1	<input type="radio"/> 2-10	<input checked="" type="radio"/> 11-100	<input type="radio"/> 101+	Length (inches)	<input type="text" value="1"/>	Comments	<input type="text"/>	
<a href="#">Damsel fish?</a>	<input type="text"/>	<input type="radio"/> 1	<input type="radio"/> 2-10	<input type="radio"/> 11-100	<input type="radio"/> 101+	Length (inches)	<input type="text"/>	Comments	<input type="text"/>
<a href="#">Dolphin?</a>	<input type="text"/>	<input type="radio"/> 1	<input type="radio"/> 2-10	<input type="radio"/> 11-100	<input type="radio"/> 101+	Length (inches)	<input type="text"/>	Comments	<input type="text"/>
<a href="#">Drum-Cubbyu</a>	<input type="radio"/> 1	<input type="radio"/> 2-10	<input checked="" type="radio"/> 11-100	<input type="radio"/> 101+	Length (inches)	<input type="text" value="1-8"/>	Comments	<input type="text"/>	
<a href="#">Drum-Jackknifefish</a>	<input type="radio"/> 1	<input type="radio"/> 2-10	<input type="radio"/> 11-100	<input type="radio"/> 101+	Length (inches)	<input type="text"/>	Comments	<input type="text"/>	
<a href="#">Eel?</a>	<input type="text"/>	<input type="radio"/> 1	<input type="radio"/> 2-10	<input type="radio"/> 11-100	<input type="radio"/> 101+	Length (inches)	<input type="text"/>	Comments	<input type="text"/>
<a href="#">Flounder-Gulf</a>	<input type="radio"/> 1	<input type="radio"/> 2-10	<input type="radio"/> 11-100	<input type="radio"/> 101+	Length (inches)	<input type="text"/>	Comments	<input type="text"/>	
<a href="#">Filefish?</a>	<input type="text"/>	<input type="radio"/> 1	<input type="radio"/> 2-10	<input type="radio"/> 11-100	<input type="radio"/> 101+	Length (inches)	<input type="text"/>	Comments	<input type="text"/>
<a href="#">Frogfish-Ocellated</a>	<input type="radio"/> 1	<input type="radio"/> 2-10	<input type="radio"/> 11-100	<input type="radio"/> 101+	Length (inches)	<input type="text"/>	Comments	<input type="text"/>	
<a href="#">Goby-Spotted</a>	<input type="radio"/> 1	<input type="radio"/> 2-10	<input type="radio"/> 11-100	<input type="radio"/> 101+	Length (inches)	<input type="text"/>	Comments	<input type="text"/>	
<a href="#">Goby?</a>	<input type="text"/>	<input type="radio"/> 1	<input type="radio"/> 2-10	<input type="radio"/> 11-100	<input type="radio"/> 101+	Length (inches)	<input type="text"/>	Comments	<input type="text"/>

<a href="#">Grouper-Gag</a>	<input type="radio"/> 1	<input checked="" type="radio"/> 2-10	<input type="radio"/> 11-100	<input type="radio"/> 101+	Length (inches)	<input type="text" value="10-12"/>	Comments	<input type="text"/>	
<a href="#">Grouper-Goliath</a>	<input type="radio"/> 1	<input type="radio"/> 2-10	<input type="radio"/> 11-100	<input type="radio"/> 101+	Length (inches)	<input type="text"/>	Comments	<input type="text"/>	
<a href="#">Grouper-Red</a>	<input type="radio"/> 1	<input type="radio"/> 2-10	<input type="radio"/> 11-100	<input type="radio"/> 101+	Length (inches)	<input type="text"/>	Comments	<input type="text"/>	
<a href="#">Grouper-Rock-Hind</a>	<input type="radio"/> 1	<input type="radio"/> 2-10	<input type="radio"/> 11-100	<input type="radio"/> 101+	Length (inches)	<input type="text"/>	Comments	<input type="text"/>	
<a href="#">Grouper-Scamp</a>	<input type="radio"/> 1	<input type="radio"/> 2-10	<input type="radio"/> 11-100	<input type="radio"/> 101+	Length (inches)	<input type="text"/>	Comments	<input type="text"/>	
<a href="#">Grunt-Tomate</a>	<input type="radio"/> 1	<input type="radio"/> 2-10	<input type="radio"/> 11-100	<input checked="" type="radio"/> 101+	Length (inches)	<input type="text" value="1-6"/>	Comments	<input type="text"/>	
<a href="#">Grunt-White</a>	<input type="radio"/> 1	<input type="radio"/> 2-10	<input type="radio"/> 11-100	<input type="radio"/> 101+	Length (inches)	<input type="text"/>	Comments	<input type="text"/>	
<a href="#">Grunt?</a>	<input type="text" value=""/>	<input type="radio"/> 1	<input type="radio"/> 2-10	<input type="radio"/> 11-100	<input type="radio"/> 101+	Length (inches)	<input type="text"/>	Comments	<input type="text"/>
<a href="#">Jack-Almaco-Lesser-AJ</a>	<input type="radio"/> 1	<input type="radio"/> 2-10	<input type="radio"/> 11-100	<input type="radio"/> 101+	Length (inches)	<input type="text"/>	Comments	<input type="text"/>	
<a href="#">Jack-Blue-Runner</a>	<input type="radio"/> 1	<input checked="" type="radio"/> 2-10	<input type="radio"/> 11-100	<input type="radio"/> 101+	Length (inches)	<input type="text" value="7"/>	Comments	<input type="text"/>	
<a href="#">Jack-Greater-Amberjack</a>	<input type="radio"/> 1	<input type="radio"/> 2-10	<input type="radio"/> 11-100	<input type="radio"/> 101+	Length (inches)	<input type="text"/>	Comments	<input type="text"/>	
<a href="#">Jack-Lookdown</a>	<input type="radio"/> 1	<input type="radio"/> 2-10	<input type="radio"/> 11-100	<input type="radio"/> 101+	Length (inches)	<input type="text"/>	Comments	<input type="text"/>	
<a href="#">Jack-Rainbow-Runner</a>	<input type="radio"/> 1	<input type="radio"/> 2-10	<input type="radio"/> 11-100	<input type="radio"/> 101+	Length (inches)	<input type="text"/>	Comments	<input type="text"/>	
<a href="#">Jack-Round-Scad-Cigar-Minnow</a>	<input type="radio"/> 1	<input type="radio"/> 2-10	<input type="radio"/> 11-100	<input type="radio"/> 101+	Length (inches)	<input type="text"/>	Comments	<input type="text"/>	
<a href="#">Jack?</a>	<input type="text" value=""/>	<input type="radio"/> 1	<input type="radio"/> 2-10	<input type="radio"/> 11-100	<input type="radio"/> 101+	Length (inches)	<input type="text"/>	Comments	<input type="text"/>
<a href="#">Lizardfish?</a>	<input type="text" value=""/>	<input type="radio"/> 1	<input type="radio"/> 2-10	<input type="radio"/> 11-100	<input type="radio"/> 101+	Length (inches)	<input type="text"/>	Comments	<input type="text"/>
<a href="#">Mackerel-King</a>	<input type="radio"/> 1	<input type="radio"/> 2-10	<input type="radio"/> 11-100	<input type="radio"/> 101+	Length (inches)	<input type="text"/>	Comments	<input type="text"/>	
<a href="#">Mackerel-Spanish</a>	<input type="radio"/> 1	<input type="radio"/> 2-10	<input type="radio"/> 11-100	<input type="radio"/> 101+	Length (inches)	<input type="text"/>	Comments	<input type="text"/>	
<a href="#">Mahi</a>	<input type="radio"/> 1	<input type="radio"/> 2-10	<input type="radio"/> 11-100	<input type="radio"/> 101+	Length (inches)	<input type="text"/>	Comments	<input type="text"/>	
<a href="#">Minnows-Glass-Small-Fry</a>	<input type="radio"/> 1	<input type="radio"/> 2-10	<input type="radio"/> 11-100	<input checked="" type="radio"/> 101+	Length (inches)	<input type="text" value="1"/>	Comments	<input type="text"/>	
<a href="#">Pinfish?</a>	<input type="text" value=""/>	<input type="radio"/> 1	<input type="radio"/> 2-10	<input type="radio"/> 11-100	<input type="radio"/> 101+	Length (inches)	<input type="text"/>	Comments	<input type="text"/>
<a href="#">Porgy-Saucereye</a>	<input type="radio"/> 1	<input type="radio"/> 2-10	<input type="radio"/> 11-100	<input type="radio"/> 101+	Length (inches)	<input type="text"/>	Comments	<input type="text"/>	
<a href="#">Porgy-Sheepshead-Porgy</a>	<input type="radio"/> 1	<input checked="" type="radio"/> 2-10	<input type="radio"/> 11-100	<input type="radio"/> 101+	Length (inches)	<input type="text" value="12"/>	Comments	<input type="text"/>	
<a href="#">Porgy-Sheepshead</a>	<input type="radio"/> 1	<input type="radio"/> 2-10	<input type="radio"/> 11-100	<input type="radio"/> 101+	Length (inches)	<input type="text"/>	Comments	<input type="text"/>	
<a href="#">Porgy?</a>	<input type="text" value=""/>	<input type="radio"/> 1	<input type="radio"/> 2-10	<input type="radio"/> 11-100	<input type="radio"/> 101+	Length (inches)	<input type="text"/>	Comments	<input type="text"/>
<a href="#">Puffer-Bandtail</a>	<input type="radio"/> 1	<input type="radio"/> 2-10	<input type="radio"/> 11-100	<input type="radio"/> 101+	Length (inches)	<input type="text"/>	Comments	<input type="text"/>	
<a href="#">Puffer-Sharpnose</a>	<input type="radio"/> 1	<input type="radio"/> 2-10	<input type="radio"/> 11-100	<input type="radio"/> 101+	Length (inches)	<input type="text"/>	Comments	<input type="text"/>	
<a href="#">Puffer?</a>	<input type="text" value=""/>	<input type="radio"/> 1	<input type="radio"/> 2-10	<input type="radio"/> 11-100	<input type="radio"/> 101+	Length (inches)	<input type="text"/>	Comments	<input type="text"/>

<a href="#">Ray?</a>	<input type="text"/>	<input type="radio"/> 1	<input type="radio"/> 2-10	<input type="radio"/> 11-100	<input type="radio"/> 101+	Length (inches)	<input type="text"/>	Comments	<input type="text"/>
<a href="#">Shark?</a>	<input type="text"/>	<input type="radio"/> 1	<input type="radio"/> 2-10	<input type="radio"/> 11-100	<input type="radio"/> 101+	Length (inches)	<input type="text"/>	Comments	<input type="text"/>
<a href="#">Sharksucker-Sharksucker</a>		<input type="radio"/> 1	<input type="radio"/> 2-10	<input type="radio"/> 11-100	<input type="radio"/> 101+	Length (inches)	<input type="text"/>	Comments	<input type="text"/>
<a href="#">Sharksucker-Whitefin</a>		<input type="radio"/> 1	<input type="radio"/> 2-10	<input type="radio"/> 11-100	<input type="radio"/> 101+	Length (inches)	<input type="text"/>	Comments	<input type="text"/>
<a href="#">Sand-Perch</a>		<input type="radio"/> 1	<input type="radio"/> 2-10	<input checked="" type="radio"/> 11-100	<input type="radio"/> 101+	Length (inches)	<input type="text" value="3"/>	Comments	<input type="text"/>
<a href="#">Seabass-Bank</a>		<input type="radio"/> 1	<input checked="" type="radio"/> 2-10	<input type="radio"/> 11-100	<input type="radio"/> 101+	Length (inches)	<input type="text" value="3"/>	Comments	<input type="text"/>
<a href="#">Seabass-Belted-Sandfish</a>		<input checked="" type="radio"/> 1	<input type="radio"/> 2-10	<input type="radio"/> 11-100	<input type="radio"/> 101+	Length (inches)	<input type="text" value="3"/>	Comments	<input type="text"/>
<a href="#">Seabass-Black</a>		<input type="radio"/> 1	<input type="radio"/> 2-10	<input type="radio"/> 11-100	<input type="radio"/> 101+	Length (inches)	<input type="text" value="8"/>	Comments	<input type="text"/>
<a href="#">Seabass-Pygmy</a>		<input type="radio"/> 1	<input type="radio"/> 2-10	<input type="radio"/> 11-100	<input type="radio"/> 101+	Length (inches)	<input type="text" value="1"/>	Comments	<input type="text"/>
<a href="#">Seabass?</a>	<input type="text"/>	<input type="radio"/> 1	<input type="radio"/> 2-10	<input type="radio"/> 11-100	<input type="radio"/> 101+	Length (inches)	<input type="text"/>	Comments	<input type="text"/>
<a href="#">Snapper-Gray</a>		<input type="radio"/> 1	<input type="radio"/> 2-10	<input type="radio"/> 11-100	<input type="radio"/> 101+	Length (inches)	<input type="text"/>	Comments	<input type="text"/>
<a href="#">Snapper-Lane</a>		<input type="radio"/> 1	<input type="radio"/> 2-10	<input type="radio"/> 11-100	<input type="radio"/> 101+	Length (inches)	<input type="text"/>	Comments	<input type="text"/>
<a href="#">Snapper-Red</a>		<input type="radio"/> 1	<input type="radio"/> 2-10	<input type="radio"/> 11-100	<input type="radio"/> 101+	Length (inches)	<input type="text"/>	Comments	<input type="text"/>
<a href="#">Snapper-Vermillion</a>		<input type="radio"/> 1	<input type="radio"/> 2-10	<input type="radio"/> 11-100	<input type="radio"/> 101+	Length (inches)	<input type="text"/>	Comments	<input type="text"/>
<a href="#">Snapper?</a>	<input type="text"/>	<input type="radio"/> 1	<input type="radio"/> 2-10	<input type="radio"/> 11-100	<input type="radio"/> 101+	Length (inches)	<input type="text"/>	Comments	<input type="text"/>
<a href="#">Soapfish-Whitespotted</a>		<input type="radio"/> 1	<input type="radio"/> 2-10	<input checked="" type="radio"/> 11-100	<input type="radio"/> 101+	Length (inches)	<input type="text" value="6"/>	Comments	<input type="text"/>
<a href="#">Spadefish-Atlantic</a>		<input type="radio"/> 1	<input type="radio"/> 2-10	<input type="radio"/> 11-100	<input type="radio"/> 101+	Length (inches)	<input type="text"/>	Comments	<input type="text"/>
<a href="#">Toadfish-Leopard</a>		<input type="radio"/> 1	<input type="radio"/> 2-10	<input type="radio"/> 11-100	<input type="radio"/> 101+	Length (inches)	<input type="text"/>	Comments	<input type="text"/>
<a href="#">Triggerfish-Gray</a>		<input type="radio"/> 1	<input checked="" type="radio"/> 2-10	<input type="radio"/> 11-100	<input type="radio"/> 101+	Length (inches)	<input type="text" value="12"/>	Comments	<input type="text"/>
<a href="#">Wrasse-Slippery-Dick</a>		<input type="radio"/> 1	<input type="radio"/> 2-10	<input checked="" type="radio"/> 11-100	<input type="radio"/> 101+	Length (inches)	<input type="text" value="1"/>	Comments	<input type="text"/>
<a href="#">Unlisted</a>	<input type="text" value="Bluelined&lt;br/&gt;Shadfish"/>	<input checked="" type="radio"/> 1	<input type="radio"/> 2-10	<input type="radio"/> 11-100	<input type="radio"/> 101+	Length (inches)	<input type="text" value="4"/>	Comments	<input type="text"/>
<a href="#">Unlisted</a>	<input type="text"/>	<input type="radio"/> 1	<input type="radio"/> 2-10	<input type="radio"/> 11-100	<input type="radio"/> 101+	Length (inches)	<input type="text"/>	Comments	<input type="text"/>
<a href="#">Unlisted</a>	<input type="text"/>	<input type="radio"/> 1	<input type="radio"/> 2-10	<input type="radio"/> 11-100	<input type="radio"/> 101+	Length (inches)	<input type="text"/>	Comments	<input type="text"/>
<a href="#">Unlisted</a>	<input type="text"/>	<input type="radio"/> 1	<input type="radio"/> 2-10	<input type="radio"/> 11-100	<input type="radio"/> 101+	Length (inches)	<input type="text"/>	Comments	<input type="text"/>
<a href="#">Unlisted</a>	<input type="text"/>	<input type="radio"/> 1	<input type="radio"/> 2-10	<input type="radio"/> 11-100	<input type="radio"/> 101+	Length (inches)	<input type="text"/>	Comments	<input type="text"/>
<a href="#">Unlisted</a>	<input type="text"/>	<input type="radio"/> 1	<input type="radio"/> 2-10	<input type="radio"/> 11-100	<input type="radio"/> 101+	Length (inches)	<input type="text"/>	Comments	<input type="text"/>
<a href="#">Unlisted</a>	<input type="text"/>	<input type="radio"/> 1	<input type="radio"/> 2-10	<input type="radio"/> 11-100	<input type="radio"/> 101+	Length (inches)	<input type="text"/>	Comments	<input type="text"/>
<a href="#">Unlisted</a>	<input type="text"/>	<input type="radio"/> 1	<input type="radio"/> 2-10	<input type="radio"/> 11-100	<input type="radio"/> 101+	Length (inches)	<input type="text"/>	Comments	<input type="text"/>

## Growth on Reef (Click on the hyper-links below for identification)

<a href="#">Algae</a>	<input type="radio"/> 1-25%	<input type="radio"/> 26-50%	<input type="radio"/> 51-75%	<input type="radio"/> 76-100%	Size (inches)	<input type="text"/>	Describe	<input type="text"/>	
<a href="#">Anemone</a>	<input type="radio"/> 1-25%	<input checked="" type="radio"/> 26-50%	<input type="radio"/> 51-75%	<input type="radio"/> 76-100%	Size (inches)	<input type="text"/>	Describe	<input type="text"/>	
<a href="#">Barnacles</a>	<input type="radio"/> 1-25%	<input type="radio"/> 26-50%	<input type="radio"/> 51-75%	<input type="radio"/> 76-100%	Size (inches)	<input type="text"/>	Describe	<input type="text"/>	
<a href="#">Bivalves</a>	<input type="radio"/> 1-25%	<input type="radio"/> 26-50%	<input type="radio"/> 51-75%	<input type="radio"/> 76-100%	Size (inches)	<input type="text"/>	Describe	<input type="text"/>	
<a href="#">Coral-Colorful-Sea-Whip</a>	<input type="radio"/> 1-25%	<input type="radio"/> 26-50%	<input type="radio"/> 51-75%	<input type="radio"/> 76-100%	Size (inches)	<input type="text"/>	Describe	<input type="text"/>	
<a href="#">Coral-Hard-Unkown</a>	<input type="radio"/> 1-25%	<input type="radio"/> 26-50%	<input type="radio"/> 51-75%	<input type="radio"/> 76-100%	Size (inches)	<input type="text"/>	Describe	<input type="text"/>	
<a href="#">Coral-Gorgonian</a>	<input type="radio"/> 1-25%	<input type="radio"/> 26-50%	<input type="radio"/> 51-75%	<input type="radio"/> 76-100%	Size (inches)	<input type="text"/>	Describe	<input type="text"/>	
<a href="#">Coral-Occulina</a>	<input type="radio"/> 1-25%	<input type="radio"/> 26-50%	<input type="radio"/> 51-75%	<input type="radio"/> 76-100%	Size (inches)	<input type="text"/>	Describe	<input type="text"/>	
<a href="#">Coral-White-Telesto</a>	<input type="radio"/> 1-25%	<input type="radio"/> 26-50%	<input type="radio"/> 51-75%	<input type="radio"/> 76-100%	Size (inches)	<input type="text"/>	Describe	<input type="text"/>	
<a href="#">Feather-Duster-Worms</a>	<input type="radio"/> 1-25%	<input type="radio"/> 26-50%	<input type="radio"/> 51-75%	<input type="radio"/> 76-100%	Size (inches)	<input type="text"/>	Describe	<input type="text"/>	
<a href="#">Sponges</a>	<input checked="" type="radio"/> 1-25%	<input type="radio"/> 26-50%	<input type="radio"/> 51-75%	<input type="radio"/> 76-100%	Size (inches)	<input type="text"/>	Describe	<input type="text"/>	
<a href="#">Unlisted</a>	<input type="text"/>	<input type="radio"/> 1-25%	<input type="radio"/> 26-50%	<input type="radio"/> 51-75%	<input type="radio"/> 76-100%	Size (inches)	<input type="text"/>	Describe	<input type="text"/>

## Invertebrates at Reef (Click on the hyper-links below for identification)

<a href="#">Cowry-Spotted-Cyphoma</a>	<input type="radio"/> 1	<input type="radio"/> 2-10	<input type="radio"/> 11-100	<input type="radio"/> 101+	Size (inches)	<input type="text"/>	Comments	<input type="text"/>	
<a href="#">Cowry-West-Indian-Simnia</a>	<input type="radio"/> 1	<input type="radio"/> 2-10	<input type="radio"/> 11-100	<input type="radio"/> 101+	Size (inches)	<input type="text"/>	Comments	<input type="text"/>	
<a href="#">Crab-Swimming</a>	<input type="radio"/> 1	<input type="radio"/> 2-10	<input type="radio"/> 11-100	<input type="radio"/> 101+	Size (inches)	<input type="text"/>	Comments	<input type="text"/>	
<a href="#">Crab-Stareye-Hermit</a>	<input type="radio"/> 1	<input type="radio"/> 2-10	<input type="radio"/> 11-100	<input type="radio"/> 101+	Size (inches)	<input type="text"/>	Comments	<input type="text"/>	
<a href="#">Crab-Stone</a>	<input type="radio"/> 1	<input type="radio"/> 2-10	<input type="radio"/> 11-100	<input type="radio"/> 101+	Size (inches)	<input type="text"/>	Comments	<input type="text"/>	
<a href="#">Crab-Yellowline-Arrow</a>	<input type="radio"/> 1	<input type="radio"/> 2-10	<input type="radio"/> 11-100	<input type="radio"/> 101+	Size (inches)	<input type="text" value="3"/>	Comments	<input type="text"/>	
<a href="#">Crab?</a>	<input type="text" value="Mantis Shrimp"/>	<input type="radio"/> 1	<input checked="" type="radio"/> 2-10	<input type="radio"/> 11-100	<input type="radio"/> 101+	Size (inches)	<input type="text"/>	Comments	<input type="text"/>
<a href="#">Lobster-Shovelnose</a>	<input type="radio"/> 1	<input type="radio"/> 2-10	<input type="radio"/> 11-100	<input type="radio"/> 101+	Size (inches)	<input type="text"/>	Comments	<input type="text"/>	
<a href="#">Lobster-Spiny</a>	<input type="radio"/> 1	<input type="radio"/> 2-10	<input type="radio"/> 11-100	<input type="radio"/> 101+	Size (inches)	<input type="text"/>	Comments	<input type="text"/>	
<a href="#">Octopus</a>	<input checked="" type="radio"/> 1	<input type="radio"/> 2-10	<input type="radio"/> 11-100	<input type="radio"/> 101+	Size (inches)	<input type="text"/>	Comments	<input type="text"/>	
<a href="#">Sea-Cucumber</a>	<input type="radio"/> 1	<input type="radio"/> 2-10	<input type="radio"/> 11-100	<input type="radio"/> 101+	Size (inches)	<input type="text"/>	Comments	<input type="text"/>	
<a href="#">Sea-Slug</a>	<input type="radio"/> 1	<input type="radio"/> 2-10	<input type="radio"/> 11-100	<input type="radio"/> 101+	Size (inches)	<input type="text"/>	Comments	<input type="text"/>	
<a href="#">Sea-Star</a>	<input type="radio"/> 1	<input type="radio"/> 2-10	<input type="radio"/> 11-100	<input type="radio"/> 101+	Size (inches)	<input type="text"/>	Comments	<input type="text"/>	
<a href="#">Sea-Urchin</a>	<input type="radio"/> 1	<input type="radio"/> 2-10	<input type="radio"/> 11-100	<input type="radio"/> 101+	Size (inches)	<input type="text"/>	Comments	<input type="text"/>	

<a href="#">Snail-Atlantic-Hairy-Triton</a>	<input type="radio"/> 1	<input type="radio"/> 2-10	<input type="radio"/> 11-100	<input type="radio"/> 101+	Size (inches)	<input type="text"/>	Comments	<input type="text"/>
<a href="#">Snail-Murex</a>	<input type="radio"/> 1	<input type="radio"/> 2-10	<input type="radio"/> 11-100	<input type="radio"/> 101+	Size (inches)	<input type="text"/>	Comments	<input type="text"/>
<a href="#">Snail-Netted-Olive</a>	<input type="radio"/> 1	<input type="radio"/> 2-10	<input type="radio"/> 11-100	<input type="radio"/> 101+	Size (inches)	<input type="text"/>	Comments	<input type="text"/>
<a href="#">Snail-Florida-Horse-Conch</a>	<input type="radio"/> 1	<input type="radio"/> 2-10	<input type="radio"/> 11-100	<input type="radio"/> 101+	Size (inches)	<input type="text"/>	Comments	<input type="text"/>
<a href="#">Unlisted</a> <input type="text" value="Snails"/>	<input type="radio"/> 1	<input type="radio"/> 2-10	<input checked="" type="radio"/> 11-100	<input type="radio"/> 101+	Size (inches)	<input type="text" value="2"/>	Comments	<input type="text"/>

### Turtles and Air Breathers/Mammals (Click on the hyper-links below for identification)

<a href="#">Turtle-Green</a>	<input type="radio"/> 1	<input type="radio"/> 2-10	<input type="radio"/> 11-100	<input type="radio"/> 101+	Size (inches)	<input type="text"/>	Comments	<input type="text"/>
<a href="#">Turtle-Leatherback</a>	<input type="radio"/> 1	<input type="radio"/> 2-10	<input type="radio"/> 11-100	<input type="radio"/> 101+	Size (inches)	<input type="text"/>	Comments	<input type="text"/>
<a href="#">Turtle-Loggerhead</a>	<input type="radio"/> 1	<input type="radio"/> 2-10	<input type="radio"/> 11-100	<input type="radio"/> 101+	Size (inches)	<input type="text"/>	Comments	<input type="text"/>
<a href="#">Turtle?</a> <input type="text"/>	<input type="radio"/> 1	<input type="radio"/> 2-10	<input type="radio"/> 11-100	<input type="radio"/> 101+	Size (inches)	<input type="text"/>	Comments	<input type="text"/>
<a href="#">Whale?</a> <input type="text"/>	<input type="radio"/> 1	<input type="radio"/> 2-10	<input type="radio"/> 11-100	<input type="radio"/> 101+	Size (inches)	<input type="text"/>	Comments	<input type="text"/>
<a href="#">Unlisted</a> <input type="text"/>	<input type="radio"/> 1	<input type="radio"/> 2-10	<input type="radio"/> 11-100	<input type="radio"/> 101+	Size (inches)	<input type="text"/>	Comments	<input type="text"/>
<a href="#">Unlisted</a> <input type="text"/>	<input type="radio"/> 1	<input type="radio"/> 2-10	<input type="radio"/> 11-100	<input type="radio"/> 101+	Size (inches)	<input type="text"/>	Comments	<input type="text"/>
<a href="#">Unlisted</a> <input type="text"/>	<input type="radio"/> 1	<input type="radio"/> 2-10	<input type="radio"/> 11-100	<input type="radio"/> 101+	Size (inches)	<input type="text"/>	Comments	<input type="text"/>

### Other Observations/Photos:

Observations

Photos?  Yes  No    Attached?  Yes  No

Video?  Yes  No

[Print Form](#)

[Submit by E-mail](#)



Image Field



Image Field



Image Field



Image Field



Image Field



Image Field



Image Field



Image Field

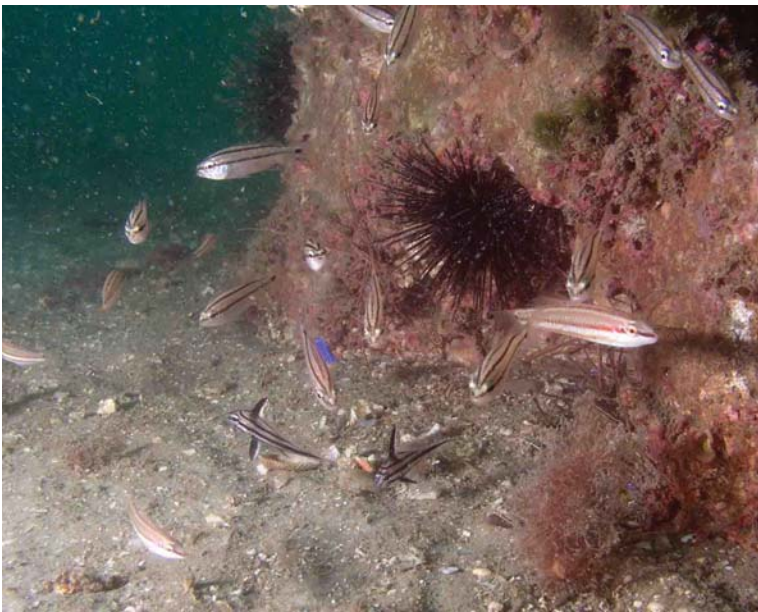


Image Field



Image Field



Image Field



Image Field





Image Field



Image Field



Image Field



Image Field



Image Field



Image Field

Image Field

Image Field

Image Field

Image Field

Image Field

Image Field