

MBARA Diver's Reef Survey Form Rev 20 Jun 2016

Clear Form

Reef Number and Name

Latitude Longitude Was published lat/lon correct? Sonar Depth (ft)

GPS Manufacturer & Model:

Survey Date Dive # Time

Cloud Cover % Wind Spd & Dir Wave Height (ft)

Boat Name Boat Captain Crew

Divers

Survey Type Depth Gauge Depth (ft) Diver Bottom Time (minutes)

Water Temp Surface (Fahrenheit) Water Temp Bottom (Fahrenheit)

Water Visibility Surface (feet) Water Visibility Bottom (feet)

Thermocline Depth (feet) Current Direction Current Speed (knots)

Other Water Column Characteristics (check all that apply)

- Plankton Algae Jellyfish Turbid Other

Bottom Composition (check all that apply)

- Sand Silt Mud Gravel Shell Other

Reef Materials & Quantity

Reef Height at Highest Point (measured from base to top of the reef)(feet)

Physical Condition (Durability, stability, storm damage, other damage or movement):

- No damage Damage No movement Movement

Explain damage/movement and suspected cause

Fish Counts (Click on the hyper-links below for identification)

<input type="checkbox"/> Angelfish-Blue	<input type="radio"/> 1	<input type="radio"/> 2-10	<input type="radio"/> 11-100	<input type="radio"/> 101+	Length (inches) <input type="text"/>	Comments <input type="text"/>
<input type="checkbox"/> Angelfish-Queen	<input type="radio"/> 1	<input type="radio"/> 2-10	<input type="radio"/> 11-100	<input type="radio"/> 101+	Length (inches) <input type="text"/>	Comments <input type="text"/>
<input type="checkbox"/> Barracuda-Great	<input type="radio"/> 1	<input type="radio"/> 2-10	<input type="radio"/> 11-100	<input type="radio"/> 101+	Length (inches) <input type="text"/>	Comments <input type="text"/>
<input type="checkbox"/> Batfish-Polka-Dot	<input type="radio"/> 1	<input type="radio"/> 2-10	<input type="radio"/> 11-100	<input type="radio"/> 101+	Length (inches) <input type="text"/>	Comments <input type="text"/>
<input checked="" type="checkbox"/> Blenny-Seaweed	<input type="radio"/> 1	<input checked="" type="radio"/> 2-10	<input type="radio"/> 11-100	<input type="radio"/> 101+	Length (inches) <input type="text"/>	Comments <input type="text"/>
<input type="checkbox"/> Blenny-?	<input type="radio"/> 1	<input type="radio"/> 2-10	<input type="radio"/> 11-100	<input type="radio"/> 101+	Length (inches) <input type="text"/>	Comments <input type="text"/>
<input type="checkbox"/> Blenny-?	<input type="radio"/> 1	<input type="radio"/> 2-10	<input type="radio"/> 11-100	<input type="radio"/> 101+	Length (inches) <input type="text"/>	Comments <input type="text"/>
<input type="checkbox"/> Butterflyfish-Spotfin	<input type="radio"/> 1	<input type="radio"/> 2-10	<input type="radio"/> 11-100	<input type="radio"/> 101+	Length (inches) <input type="text"/>	Comments <input type="text"/>
<input type="checkbox"/> Butterflyfish?	<input type="radio"/> 1	<input type="radio"/> 2-10	<input type="radio"/> 11-100	<input type="radio"/> 101+	Length (inches) <input type="text"/>	Comments <input type="text"/>
<input type="checkbox"/> Cardinalfish-Two-Spot	<input type="radio"/> 1	<input type="radio"/> 2-10	<input type="radio"/> 11-100	<input type="radio"/> 101+	Length (inches) <input type="text"/>	Comments <input type="text"/>
<input type="checkbox"/> Chromis-Purple-Reeffish	<input type="radio"/> 1	<input type="radio"/> 2-10	<input type="radio"/> 11-100	<input type="radio"/> 101+	Length (inches) <input type="text"/>	Comments <input type="text"/>
<input type="checkbox"/> Chromis-Yellowtail-Reeffish	<input type="radio"/> 1	<input type="radio"/> 2-10	<input type="radio"/> 11-100	<input type="radio"/> 101+	Length (inches) <input type="text"/>	Comments <input type="text"/>
<input checked="" type="checkbox"/> Damsel-fish-Cocoa	<input type="radio"/> 1	<input checked="" type="radio"/> 2-10	<input type="radio"/> 11-100	<input type="radio"/> 101+	Length (inches) <input type="text"/>	Comments <input type="text"/>
<input type="checkbox"/> Damsel-fish?	<input type="radio"/> 1	<input type="radio"/> 2-10	<input type="radio"/> 11-100	<input type="radio"/> 101+	Length (inches) <input type="text"/>	Comments <input type="text"/>
<input checked="" type="checkbox"/> Drum-Cubbyu	<input type="radio"/> 1	<input type="radio"/> 2-10	<input type="radio"/> 11-100	<input checked="" type="radio"/> 101+	Length (inches) <input type="text"/>	Comments <input type="text"/>
<input type="checkbox"/> Drum-Jackknifefish	<input type="radio"/> 1	<input type="radio"/> 2-10	<input type="radio"/> 11-100	<input type="radio"/> 101+	Length (inches) <input type="text"/>	Comments <input type="text"/>
<input type="checkbox"/> Eel?	<input type="radio"/> 1	<input type="radio"/> 2-10	<input type="radio"/> 11-100	<input type="radio"/> 101+	Length (inches) <input type="text"/>	Comments <input type="text"/>
<input type="checkbox"/> Flounder-Gulf	<input type="radio"/> 1	<input type="radio"/> 2-10	<input type="radio"/> 11-100	<input type="radio"/> 101+	Length (inches) <input type="text"/>	Comments <input type="text"/>
<input type="checkbox"/> Filefish?	<input type="radio"/> 1	<input type="radio"/> 2-10	<input type="radio"/> 11-100	<input type="radio"/> 101+	Length (inches) <input type="text"/>	Comments <input type="text"/>
<input type="checkbox"/> Frogfish-Ocellated	<input type="radio"/> 1	<input type="radio"/> 2-10	<input type="radio"/> 11-100	<input type="radio"/> 101+	Length (inches) <input type="text"/>	Comments <input type="text"/>
<input type="checkbox"/> Goby-Spotted	<input type="radio"/> 1	<input type="radio"/> 2-10	<input type="radio"/> 11-100	<input type="radio"/> 101+	Length (inches) <input type="text"/>	Comments <input type="text"/>
<input type="checkbox"/> Goby?	<input type="radio"/> 1	<input type="radio"/> 2-10	<input type="radio"/> 11-100	<input type="radio"/> 101+	Length (inches) <input type="text"/>	Comments <input type="text"/>

<input checked="" type="checkbox"/>	Grouper-Gag	<input checked="" type="radio"/> 1	<input type="radio"/> 2-10	<input type="radio"/> 11-100	<input type="radio"/> 101+	Length (inches)	25	Comments	
<input type="checkbox"/>	Grouper-Goliath	<input type="radio"/> 1	Length: <3ft <input type="radio"/> 3-5ft <input type="radio"/> >5ft			<input type="radio"/>	Comments		
<input type="checkbox"/>	Grouper-Goliath	<input type="radio"/> 1	Length: <3ft <input type="radio"/> 3-5ft <input type="radio"/> >5ft			<input type="radio"/>	Comments		
<input type="checkbox"/>	Grouper-Goliath	<input type="radio"/> 1	Length: <3ft <input type="radio"/> 3-5ft <input type="radio"/> >5ft			<input type="radio"/>	Comments		
<input type="checkbox"/>	Grouper-Goliath	<input type="radio"/> 1	Length: <3ft <input type="radio"/> 3-5ft <input type="radio"/> >5ft			<input type="radio"/>	Comments		
<input type="checkbox"/>	Grouper-Goliath	<input type="radio"/> 1	Length: <3ft <input type="radio"/> 3-5ft <input type="radio"/> >5ft			<input type="radio"/>	Comments		
<input type="checkbox"/>	Grouper-Goliath	<input type="radio"/> 1	Length: <3ft <input type="radio"/> 3-5ft <input type="radio"/> >5ft			<input type="radio"/>	Comments		
<input type="checkbox"/>	Grouper-Goliath	<input type="radio"/> 1	Length: <3ft <input type="radio"/> 3-5ft <input type="radio"/> >5ft			<input type="radio"/>	Comments		
<input type="checkbox"/>	Grouper-Goliath	<input type="radio"/> 1	Length: <3ft <input type="radio"/> 3-5ft <input type="radio"/> >5ft			<input type="radio"/>	Comments		
<input type="checkbox"/>	Grouper-Goliath	<input type="radio"/> 1	Length: <3ft <input type="radio"/> 3-5ft <input type="radio"/> >5ft			<input type="radio"/>	Comments		
<input type="checkbox"/>	Grouper-Graysby	<input type="radio"/> 1	<input type="radio"/> 2-10	<input type="radio"/> 11-100	<input type="radio"/> 101+	Length (inches)		Comments	
<input type="checkbox"/>	Grouper-Red	<input type="radio"/> 1	<input type="radio"/> 2-10	<input type="radio"/> 11-100	<input type="radio"/> 101+	Length (inches)		Comments	
<input type="checkbox"/>	Grouper-Rock-Hind	<input type="radio"/> 1	<input type="radio"/> 2-10	<input type="radio"/> 11-100	<input type="radio"/> 101+	Length (inches)		Comments	
<input type="checkbox"/>	Grouper-Scamp	<input type="radio"/> 1	<input type="radio"/> 2-10	<input type="radio"/> 11-100	<input type="radio"/> 101+	Length (inches)		Comments	
<input type="checkbox"/>	Grunt-Juvenile	<input type="radio"/> 1	<input type="radio"/> 2-10	<input type="radio"/> 11-100	<input type="radio"/> 101+	Length (inches)		Comments	
<input checked="" type="checkbox"/>	Grunt-Tomtate	<input type="radio"/> 1	<input type="radio"/> 2-10	<input type="radio"/> 11-100	<input checked="" type="radio"/> 101+	Length (inches)		Comments	
<input type="checkbox"/>	Grunt-White	<input type="radio"/> 1	<input type="radio"/> 2-10	<input type="radio"/> 11-100	<input type="radio"/> 101+	Length (inches)		Comments	
<input checked="" type="checkbox"/>	Grunt?	<input type="radio"/> 1	<input type="radio"/> 2-10	<input type="radio"/> 11-100	<input checked="" type="radio"/> 101+	Length (inches)		Comments	pigfish
<input type="checkbox"/>	Hogfish	<input type="radio"/> 1	<input type="radio"/> 2-10	<input type="radio"/> 11-100	<input type="radio"/> 101+	Length (inches)		Comments	
<input type="checkbox"/>	Hogfish-Spanish	<input type="radio"/> 1	<input type="radio"/> 2-10	<input type="radio"/> 11-100	<input type="radio"/> 101+	Length (inches)		Comments	
<input type="checkbox"/>	Jack-Almaco	<input type="radio"/> 1	<input type="radio"/> 2-10	<input type="radio"/> 11-100	<input type="radio"/> 101+	Length (inches)		Comments	
<input type="checkbox"/>	Jack-Blue-Runner	<input type="radio"/> 1	<input type="radio"/> 2-10	<input type="radio"/> 11-100	<input type="radio"/> 101+	Length (inches)		Comments	
<input checked="" type="checkbox"/>	Jack-Greater-Amberjack	<input checked="" type="radio"/> 1	<input type="radio"/> 2-10	<input type="radio"/> 11-100	<input type="radio"/> 101+	Length (inches)		Comments	
<input type="checkbox"/>	Jack-Rainbow-Runner	<input type="radio"/> 1	<input type="radio"/> 2-10	<input type="radio"/> 11-100	<input type="radio"/> 101+	Length (inches)		Comments	
<input checked="" type="checkbox"/>	Jack-Round-Scad-Cigar-Minnow	<input type="radio"/> 1	<input type="radio"/> 2-10	<input type="radio"/> 11-100	<input checked="" type="radio"/> 101+	Length (inches)		Comments	
<input checked="" type="checkbox"/>	Jack?	<input type="radio"/> 1	<input type="radio"/> 2-10	<input checked="" type="radio"/> 11-100	<input type="radio"/> 101+	Length (inches)		Comments	Little Tunny
<input type="checkbox"/>	Jack?	<input type="radio"/> 1	<input type="radio"/> 2-10	<input type="radio"/> 11-100	<input type="radio"/> 101+	Length (inches)		Comments	

<input type="checkbox"/>	Lionfish	<input type="radio"/> 1	<input type="radio"/> 2-10	<input type="radio"/> 11-100	<input type="radio"/> 101+	Length (inches)	<input type="text"/>	Comments	<input type="text"/>
<input type="checkbox"/>	Mackeral-King	<input type="radio"/> 1	<input type="radio"/> 2-10	<input type="radio"/> 11-100	<input type="radio"/> 101+	Length (inches)	<input type="text"/>	Comments	<input type="text"/>
<input type="checkbox"/>	Mackeral-Spanish	<input type="radio"/> 1	<input type="radio"/> 2-10	<input type="radio"/> 11-100	<input type="radio"/> 101+	Length (inches)	<input type="text"/>	Comments	<input type="text"/>
<input type="checkbox"/>	Minnows-Glass-Small-Fry	<input type="radio"/> 1	<input type="radio"/> 2-10	<input type="radio"/> 11-100	<input type="radio"/> 101+	Length (inches)	<input type="text"/>	Comments	<input type="text"/>
<input checked="" type="checkbox"/>	Pinfish?	<input type="radio"/> 1	<input checked="" type="radio"/> 2-10	<input type="radio"/> 11-100	<input type="radio"/> 101+	Length (inches)	<input type="text"/>	Comments	pinfish
<input type="checkbox"/>	Porgy-Sheepshead-Porgy	<input type="radio"/> 1	<input type="radio"/> 2-10	<input type="radio"/> 11-100	<input type="radio"/> 101+	Length (inches)	<input type="text"/>	Comments	<input type="text"/>
<input type="checkbox"/>	Porgy-Sheepshead	<input type="radio"/> 1	<input type="radio"/> 2-10	<input type="radio"/> 11-100	<input type="radio"/> 101+	Length (inches)	<input type="text"/>	Comments	<input type="text"/>
<input type="checkbox"/>	Porgy?	<input type="radio"/> 1	<input type="radio"/> 2-10	<input type="radio"/> 11-100	<input type="radio"/> 101+	Length (inches)	<input type="text"/>	Comments	<input type="text"/>
<input type="checkbox"/>	Puffer-Bandtail	<input type="radio"/> 1	<input type="radio"/> 2-10	<input type="radio"/> 11-100	<input type="radio"/> 101+	Length (inches)	<input type="text"/>	Comments	<input type="text"/>
<input checked="" type="checkbox"/>	Puffer-Sharpnose	<input checked="" type="radio"/> 1	<input type="radio"/> 2-10	<input type="radio"/> 11-100	<input type="radio"/> 101+	Length (inches)	<input type="text"/>	Comments	<input type="text"/>
<input type="checkbox"/>	Puffer?	<input type="radio"/> 1	<input type="radio"/> 2-10	<input type="radio"/> 11-100	<input type="radio"/> 101+	Length (inches)	<input type="text"/>	Comments	<input type="text"/>
<input type="checkbox"/>	Ray?	<input type="radio"/> 1	<input type="radio"/> 2-10	<input type="radio"/> 11-100	<input type="radio"/> 101+	Length (inches)	<input type="text"/>	Comments	<input type="text"/>
<input type="checkbox"/>	Shark-Bull	<input type="radio"/> 1	<input type="radio"/> 2-10	<input type="radio"/> 11-100	<input type="radio"/> 101+	Length (inches)	<input type="text"/>	Comments	<input type="text"/>
<input type="checkbox"/>	Shark-Sandbar	<input type="radio"/> 1	<input type="radio"/> 2-10	<input type="radio"/> 11-100	<input type="radio"/> 101+	Length (inches)	<input type="text"/>	Comments	<input type="text"/>
<input type="checkbox"/>	Shark?	<input type="radio"/> 1	<input type="radio"/> 2-10	<input type="radio"/> 11-100	<input type="radio"/> 101+	Length (inches)	<input type="text"/>	Comments	<input type="text"/>
<input type="checkbox"/>	Sharksucker-Sharksucker	<input type="radio"/> 1	<input type="radio"/> 2-10	<input type="radio"/> 11-100	<input type="radio"/> 101+	Length (inches)	<input type="text"/>	Comments	<input type="text"/>
<input checked="" type="checkbox"/>	Sand-Perch	<input type="radio"/> 1	<input type="radio"/> 2-10	<input checked="" type="radio"/> 11-100	<input type="radio"/> 101+	Length (inches)	<input type="text"/>	Comments	<input type="text"/>
<input checked="" type="checkbox"/>	Seabass-Bank	<input type="radio"/> 1	<input checked="" type="radio"/> 2-10	<input type="radio"/> 11-100	<input type="radio"/> 101+	Length (inches)	<input type="text"/>	Comments	<input type="text"/>
<input type="checkbox"/>	Seabass-Belted-Sandfish	<input type="radio"/> 1	<input type="radio"/> 2-10	<input type="radio"/> 11-100	<input type="radio"/> 101+	Length (inches)	<input type="text"/>	Comments	<input type="text"/>
<input type="checkbox"/>	Seabass-Black	<input type="radio"/> 1	<input type="radio"/> 2-10	<input type="radio"/> 11-100	<input type="radio"/> 101+	Length (inches)	<input type="text"/>	Comments	<input type="text"/>
<input type="checkbox"/>	Seabass-Pygmy	<input type="radio"/> 1	<input type="radio"/> 2-10	<input type="radio"/> 11-100	<input type="radio"/> 101+	Length (inches)	<input type="text"/>	Comments	<input type="text"/>
<input checked="" type="checkbox"/>	Seabass?	<input type="radio"/> 1	<input checked="" type="radio"/> 2-10	<input type="radio"/> 11-100	<input type="radio"/> 101+	Length (inches)	<input type="text"/>	Comments	Rock seabass
<input checked="" type="checkbox"/>	Snapper-Gray	<input type="radio"/> 1	<input type="radio"/> 2-10	<input checked="" type="radio"/> 11-100	<input type="radio"/> 101+	Length (inches)	<input type="text"/>	Comments	<input type="text"/>
<input type="checkbox"/>	Snapper-Lane	<input type="radio"/> 1	<input type="radio"/> 2-10	<input type="radio"/> 11-100	<input type="radio"/> 101+	Length (inches)	<input type="text"/>	Comments	<input type="text"/>
<input checked="" type="checkbox"/>	Snapper-Red	<input type="radio"/> 1	<input type="radio"/> 2-10	<input checked="" type="radio"/> 11-100	<input type="radio"/> 101+	Length (inches)	<input type="text"/>	Comments	<input type="text"/>
<input checked="" type="checkbox"/>	Snapper-Vermillion	<input type="radio"/> 1	<input checked="" type="radio"/> 2-10	<input type="radio"/> 11-100	<input type="radio"/> 101+	Length (inches)	<input type="text"/>	Comments	<input type="text"/>
<input type="checkbox"/>	Snapper?	<input type="radio"/> 1	<input type="radio"/> 2-10	<input type="radio"/> 11-100	<input type="radio"/> 101+	Length (inches)	<input type="text"/>	Comments	<input type="text"/>
<input type="checkbox"/>	Soapfish-Whitespotted	<input type="radio"/> 1	<input type="radio"/> 2-10	<input type="radio"/> 11-100	<input type="radio"/> 101+	Length (inches)	<input type="text"/>	Comments	<input type="text"/>

- [Spadefish-Atlantic](#) 1 2-10 11-100 101+ Length (inches) Comments
- [Toadfish-Leopard](#) 1 2-10 11-100 101+ Length (inches) Comments
- [Triggerfish-Gray](#) 1 2-10 11-100 101+ Length (inches) Comments
- [Wrasse-Painted-Wrasse](#) 1 2-10 11-100 101+ Length (inches) Comments
- [Wrasse-Slippery-Dick](#) 1 2-10 11-100 101+ Length (inches) Comments
- Unlisted-See-Comments 1 2-10 11-100 101+ Length (inches) Comments
- Unlisted-See-Comments 1 2-10 11-100 101+ Length (inches) Comments
- Unlisted-See-Comments 1 2-10 11-100 101+ Length (inches) Comments
- Unlisted-See-Comments 1 2-10 11-100 101+ Length (inches) Comments
- Unlisted-See-Comments 1 2-10 11-100 101+ Length (inches) Comments
- Unlisted-See-Comments 1 2-10 11-100 101+ Length (inches) Comments
- Unlisted-See-Comments 1 2-10 11-100 101+ Length (inches) Comments
- Unlisted-See-Comments 1 2-10 11-100 101+ Length (inches) Comments
- Unlisted-See-Comments 1 2-10 11-100 101+ Length (inches) Comments
- Unlisted-See-Comments 1 2-10 11-100 101+ Length (inches) Comments

Growth on Reef (Click on the hyper-links below for identification)

- [Algae](#) 1-25% 26-50% 51-75% 76-100% Size (inches) Describe
- [Anemone](#) 1-25% 26-50% 51-75% 76-100% Size (inches) Describe
- [Barnacles](#) 1-25% 26-50% 51-75% 76-100% Size (inches) Describe
- [Bivalves](#) 1-25% 26-50% 51-75% 76-100% Size (inches) Describe
- [Coral-Colorful-Sea-Whip](#) 1-25% 26-50% 51-75% 76-100% Size (inches) Describe
- [Coral-Hard-Unkown](#) 1-25% 26-50% 51-75% 76-100% Size (inches) Describe
- [Coral-Gorgonian](#) 1-25% 26-50% 51-75% 76-100% Size (inches) Describe
- [Coral-Occulina](#) 1-25% 26-50% 51-75% 76-100% Size (inches) Describe
- [Coral-White-Telesto](#) 1-25% 26-50% 51-75% 76-100% Size (inches) Describe
- [Feather-Duster-Worms](#) 1-25% 26-50% 51-75% 76-100% Size (inches) Describe
- [Sponges](#) 1-25% 26-50% 51-75% 76-100% Size (inches) Describe
- [Tunicates](#) 1-25% 26-50% 51-75% 76-100% Size (inches) Describe

- Unlisted-See-Comments 1-25% 26-50% 51-75% 76-100% Size (inches) Describe
- Unlisted-See-Comments 1-25% 26-50% 51-75% 76-100% Size (inches) Describe
- Unlisted-See-Comments 1-25% 26-50% 51-75% 76-100% Size (inches) Describe

Invertebrates at Reef (Click on the hyper-links below for identification)

- [Cowry-?](#) 1 2-10 11-100 101+ Size (inches) Comments
- [Cowry-?](#) 1 2-10 11-100 101+ Size (inches) Comments
- [Cowry-?](#) 1 2-10 11-100 101+ Size (inches) Comments
- [Crab-Hermit](#) 1 2-10 11-100 101+ Size (inches) Comments
- [Crab-Yellowline-Arrow](#) 1 2-10 11-100 101+ Size (inches) Comments
- [Crab?](#) 1 2-10 11-100 101+ Size (inches) Comments
- [Crab?](#) 1 2-10 11-100 101+ Size (inches) Comments
- [Lobster-Shovelnose](#) 1 2-10 11-100 101+ Size (inches) Comments
- [Octopus](#) 1 2-10 11-100 101+ Size (inches) Comments
- [Sea-Cucumber](#) 1 2-10 11-100 101+ Size (inches) Comments
- [Sea-Slug](#) 1 2-10 11-100 101+ Size (inches) Comments
- [Sea-Star](#) 1 2-10 11-100 101+ Size (inches) Comments
- [Sea-Urchin](#) 1 2-10 11-100 101+ Size (inches) Comments
- [Shrimp-?](#) 1 2-10 11-100 101+ Size (inches) Comments
- [Shrimp-?](#) 1 2-10 11-100 101+ Size (inches) Comments
- [Snail-Florida-Horse-Conch](#) 1 2-10 11-100 101+ Size (inches) Comments
- [Snail-?](#) 1 2-10 11-100 101+ Size (inches) Comments
- [Snail-?](#) 1 2-10 11-100 101+ Size (inches) Comments
- Unlisted-See-Comments 1 2-10 11-100 101+ Size (inches) Comments
- Unlisted-See-Comments 1 2-10 11-100 101+ Size (inches) Comments
- Unlisted-See-Comments 1 2-10 11-100 101+ Size (inches) Comments
- Unlisted-See-Comments 1 2-10 11-100 101+ Size (inches) Comments
- Unlisted-See-Comments 1 2-10 11-100 101+ Size (inches) Comments

Turtles and Air Breathers/Mammals (Click on the hyper-links below for identification)

<input type="checkbox"/> Dolphin?	<input type="radio"/> 1	<input type="radio"/> 2-10	<input type="radio"/> 11-100	<input type="radio"/> 101+	Length (inches)	<input type="text"/>	Comments	<input type="text"/>
<input type="checkbox"/> Turtle-Loggerhead	<input type="radio"/> 1	<input type="radio"/> 2-10	<input type="radio"/> 11-100	<input type="radio"/> 101+	Size (inches)	<input type="text"/>	Comments	<input type="text"/>
<input checked="" type="checkbox"/> Turtle?	<input checked="" type="radio"/> 1	<input type="radio"/> 2-10	<input type="radio"/> 11-100	<input type="radio"/> 101+	Size (inches)	<input type="text"/>	Comments	<input type="text" value="Kemp's Ridley"/>
<input type="checkbox"/> Whale?	<input type="radio"/> 1	<input type="radio"/> 2-10	<input type="radio"/> 11-100	<input type="radio"/> 101+	Size (inches)	<input type="text"/>	Comments	<input type="text"/>
<input type="checkbox"/> Unlisted-See-Comments	<input type="radio"/> 1	<input type="radio"/> 2-10	<input type="radio"/> 11-100	<input type="radio"/> 101+	Size (inches)	<input type="text"/>	Comments	<input type="text"/>

Other Observations/Photos:

Observations

Video URL: <https://youtu.be/LCj5fetMmXQ>

Photos?	<input type="text" value="Yes"/>	Attached?	<input type="text" value="Yes"/>
Video?	<input type="text" value="Yes"/>		

Print Form



Image Field



Image Field



Image Field



Image Field



Image Field

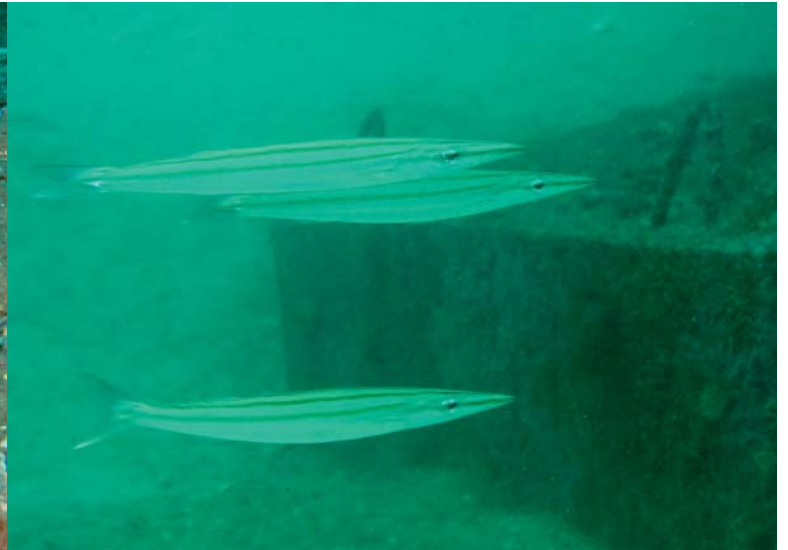


Image Field



Image Field



Image Field



Image Field

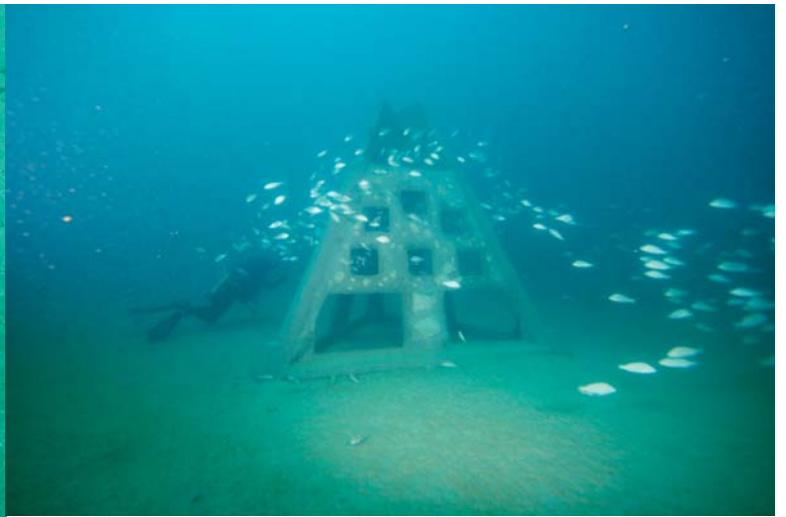


Image Field



Image Field

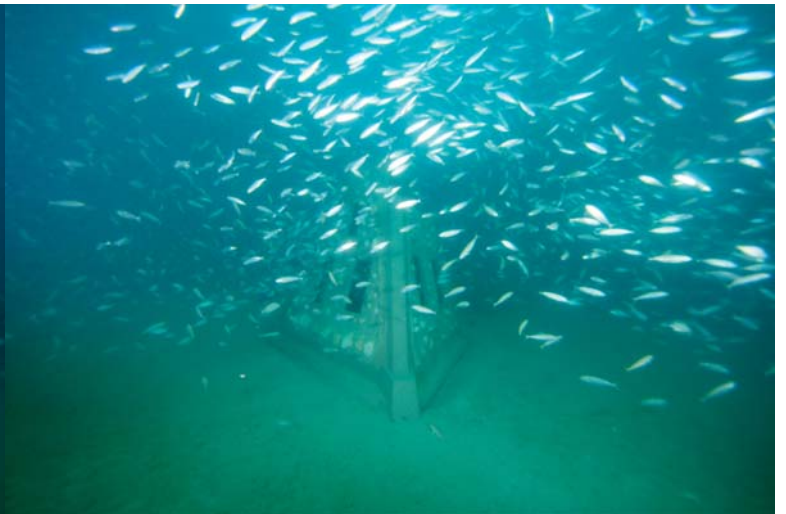


Image Field



Image Field



Image Field



Image Field



Image Field



Image Field



Image Field



Image Field



Image Field



Image Field



Image Field



Image Field

Image Field