

# MBARA Diver's Reef Survey Form Rev 20 Jun 2016

Clear Form

Reef Number and Name

Latitude  Longitude  Was published lat/lon correct?  Sonar Depth (ft)

GPS Manufacturer & Model:

Survey Date  Dive #  Time

Cloud Cover %  Wind Spd & Dir  Wave Height (ft)

Boat Name  Boat Captain  Crew

Divers

Survey Type  Depth Gauge Depth (ft)  Diver Bottom Time (minutes)

Water Temp Surface (Fahrenheit)  Water Temp Bottom (Fahrenheit)

Water Visibility Surface (feet)  Water Visibility Bottom (feet)

Thermocline Depth (feet)  Current Direction  Current Speed (knots)

Other Water Column Characteristics (check all that apply)

- Plankton  Algae  Jellyfish  Turbid  Other

Bottom Composition (check all that apply)

- Sand  Silt  Mud  Gravel  Shell  Other

Reef Materials & Quantity

Reef Height at Highest Point (measured from base to top of the reef)(feet)

Physical Condition (Durability, stability, storm damage, other damage or movement):

- No damage  Damage  No movement  Movement

Explain damage/movement and suspected cause

## Fish Counts (Click on the hyper-links below for identification)

<input type="checkbox"/> <a href="#">Angelfish-Blue</a>	<input type="radio"/> 1	<input type="radio"/> 2-10	<input type="radio"/> 11-100	<input type="radio"/> 101+	Length (inches)	<input type="text"/>	Comments	<input type="text"/>
<input type="checkbox"/> <a href="#">Angelfish-Queen</a>	<input type="radio"/> 1	<input type="radio"/> 2-10	<input type="radio"/> 11-100	<input type="radio"/> 101+	Length (inches)	<input type="text"/>	Comments	<input type="text"/>
<input type="checkbox"/> <a href="#">Barracuda-Great</a>	<input type="radio"/> 1	<input type="radio"/> 2-10	<input type="radio"/> 11-100	<input type="radio"/> 101+	Length (inches)	<input type="text"/>	Comments	<input type="text"/>
<input type="checkbox"/> <a href="#">Batfish-Polka-Dot</a>	<input type="radio"/> 1	<input type="radio"/> 2-10	<input type="radio"/> 11-100	<input type="radio"/> 101+	Length (inches)	<input type="text"/>	Comments	<input type="text"/>
<input type="checkbox"/> <a href="#">Blenny-Seaweed</a>	<input type="radio"/> 1	<input type="radio"/> 2-10	<input type="radio"/> 11-100	<input type="radio"/> 101+	Length (inches)	<input type="text"/>	Comments	<input type="text"/>
<input type="checkbox"/> <a href="#">Blenny-?</a>	<input type="radio"/> 1	<input type="radio"/> 2-10	<input type="radio"/> 11-100	<input type="radio"/> 101+	Length (inches)	<input type="text"/>	Comments	<input type="text"/>
<input type="checkbox"/> <a href="#">Blenny-?</a>	<input type="radio"/> 1	<input type="radio"/> 2-10	<input type="radio"/> 11-100	<input type="radio"/> 101+	Length (inches)	<input type="text"/>	Comments	<input type="text"/>
<input type="checkbox"/> <a href="#">Butterflyfish-Spotfin</a>	<input type="radio"/> 1	<input type="radio"/> 2-10	<input type="radio"/> 11-100	<input type="radio"/> 101+	Length (inches)	<input type="text"/>	Comments	<input type="text"/>
<input type="checkbox"/> <a href="#">Butterflyfish?</a>	<input type="radio"/> 1	<input type="radio"/> 2-10	<input type="radio"/> 11-100	<input type="radio"/> 101+	Length (inches)	<input type="text"/>	Comments	<input type="text"/>
<input type="checkbox"/> <a href="#">Cardinalfish-Two-Spot</a>	<input type="radio"/> 1	<input type="radio"/> 2-10	<input type="radio"/> 11-100	<input type="radio"/> 101+	Length (inches)	<input type="text"/>	Comments	<input type="text"/>
<input type="checkbox"/> <a href="#">Chromis-Purple-Reeffish</a>	<input type="radio"/> 1	<input type="radio"/> 2-10	<input type="radio"/> 11-100	<input type="radio"/> 101+	Length (inches)	<input type="text"/>	Comments	<input type="text"/>
<input type="checkbox"/> <a href="#">Chromis-Yellowtail-Reeffish</a>	<input type="radio"/> 1	<input type="radio"/> 2-10	<input type="radio"/> 11-100	<input type="radio"/> 101+	Length (inches)	<input type="text"/>	Comments	<input type="text"/>
<input type="checkbox"/> <a href="#">Damsel-Cocoa</a>	<input type="radio"/> 1	<input type="radio"/> 2-10	<input type="radio"/> 11-100	<input type="radio"/> 101+	Length (inches)	<input type="text"/>	Comments	<input type="text"/>
<input type="checkbox"/> <a href="#">Damsel?</a>	<input type="radio"/> 1	<input type="radio"/> 2-10	<input type="radio"/> 11-100	<input type="radio"/> 101+	Length (inches)	<input type="text"/>	Comments	<input type="text"/>
<input type="checkbox"/> <a href="#">Drum-Cubbyu</a>	<input type="radio"/> 1	<input type="radio"/> 2-10	<input type="radio"/> 11-100	<input type="radio"/> 101+	Length (inches)	<input type="text"/>	Comments	<input type="text"/>
<input type="checkbox"/> <a href="#">Drum-Jackknifefish</a>	<input type="radio"/> 1	<input type="radio"/> 2-10	<input type="radio"/> 11-100	<input type="radio"/> 101+	Length (inches)	<input type="text"/>	Comments	<input type="text"/>
<input type="checkbox"/> <a href="#">Eel?</a>	<input type="radio"/> 1	<input type="radio"/> 2-10	<input type="radio"/> 11-100	<input type="radio"/> 101+	Length (inches)	<input type="text"/>	Comments	<input type="text"/>
<input type="checkbox"/> <a href="#">Flounder-Gulf</a>	<input type="radio"/> 1	<input type="radio"/> 2-10	<input type="radio"/> 11-100	<input type="radio"/> 101+	Length (inches)	<input type="text"/>	Comments	<input type="text"/>
<input type="checkbox"/> <a href="#">Filefish?</a>	<input type="radio"/> 1	<input type="radio"/> 2-10	<input type="radio"/> 11-100	<input type="radio"/> 101+	Length (inches)	<input type="text"/>	Comments	<input type="text"/>
<input type="checkbox"/> <a href="#">Frogfish-Ocellated</a>	<input type="radio"/> 1	<input type="radio"/> 2-10	<input type="radio"/> 11-100	<input type="radio"/> 101+	Length (inches)	<input type="text"/>	Comments	<input type="text"/>
<input type="checkbox"/> <a href="#">Goby-Spotted</a>	<input type="radio"/> 1	<input type="radio"/> 2-10	<input type="radio"/> 11-100	<input type="radio"/> 101+	Length (inches)	<input type="text"/>	Comments	<input type="text"/>
<input type="checkbox"/> <a href="#">Goby?</a>	<input type="radio"/> 1	<input type="radio"/> 2-10	<input type="radio"/> 11-100	<input type="radio"/> 101+	Length (inches)	<input type="text"/>	Comments	<input type="text"/>

<input type="checkbox"/> <a href="#">Grouper-Gag</a>	<input type="radio"/> 1	<input type="radio"/> 2-10	<input type="radio"/> 11-100	<input type="radio"/> 101+	Length (inches)	<input type="text"/>	Comments	<input type="text"/>	
<input type="checkbox"/> <a href="#">Grouper-Goliath</a>	<input type="radio"/> 1	Length: <3ft			<input type="radio"/> 3-5ft	<input type="radio"/> >5ft	<input type="radio"/>	Comments	<input type="text"/>
<input type="checkbox"/> <a href="#">Grouper-Goliath</a>	<input type="radio"/> 1	Length: <3ft			<input type="radio"/> 3-5ft	<input type="radio"/> >5ft	<input type="radio"/>	Comments	<input type="text"/>
<input type="checkbox"/> <a href="#">Grouper-Goliath</a>	<input type="radio"/> 1	Length: <3ft			<input type="radio"/> 3-5ft	<input type="radio"/> >5ft	<input type="radio"/>	Comments	<input type="text"/>
<input type="checkbox"/> <a href="#">Grouper-Goliath</a>	<input type="radio"/> 1	Length: <3ft			<input type="radio"/> 3-5ft	<input type="radio"/> >5ft	<input type="radio"/>	Comments	<input type="text"/>
<input type="checkbox"/> <a href="#">Grouper-Goliath</a>	<input type="radio"/> 1	Length: <3ft			<input type="radio"/> 3-5ft	<input type="radio"/> >5ft	<input type="radio"/>	Comments	<input type="text"/>
<input type="checkbox"/> <a href="#">Grouper-Goliath</a>	<input type="radio"/> 1	Length: <3ft			<input type="radio"/> 3-5ft	<input type="radio"/> >5ft	<input type="radio"/>	Comments	<input type="text"/>
<input type="checkbox"/> <a href="#">Grouper-Goliath</a>	<input type="radio"/> 1	Length: <3ft			<input type="radio"/> 3-5ft	<input type="radio"/> >5ft	<input type="radio"/>	Comments	<input type="text"/>
<input type="checkbox"/> <a href="#">Grouper-Goliath</a>	<input type="radio"/> 1	Length: <3ft			<input type="radio"/> 3-5ft	<input type="radio"/> >5ft	<input type="radio"/>	Comments	<input type="text"/>
<input type="checkbox"/> <a href="#">Grouper-Goliath</a>	<input type="radio"/> 1	Length: <3ft			<input type="radio"/> 3-5ft	<input type="radio"/> >5ft	<input type="radio"/>	Comments	<input type="text"/>
<input type="checkbox"/> <a href="#">Grouper-Graysby</a>	<input type="radio"/> 1	<input type="radio"/> 2-10	<input type="radio"/> 11-100	<input type="radio"/> 101+	Length (inches)	<input type="text"/>	Comments	<input type="text"/>	
<input type="checkbox"/> <a href="#">Grouper-Red</a>	<input type="radio"/> 1	<input type="radio"/> 2-10	<input type="radio"/> 11-100	<input type="radio"/> 101+	Length (inches)	<input type="text"/>	Comments	<input type="text"/>	
<input type="checkbox"/> <a href="#">Grouper-Rock-Hind</a>	<input type="radio"/> 1	<input type="radio"/> 2-10	<input type="radio"/> 11-100	<input type="radio"/> 101+	Length (inches)	<input type="text"/>	Comments	<input type="text"/>	
<input type="checkbox"/> <a href="#">Grouper-Scamp</a>	<input type="radio"/> 1	<input type="radio"/> 2-10	<input type="radio"/> 11-100	<input type="radio"/> 101+	Length (inches)	<input type="text"/>	Comments	<input type="text"/>	
<input type="checkbox"/> <a href="#">Grunt-Juvenile</a>	<input type="radio"/> 1	<input type="radio"/> 2-10	<input type="radio"/> 11-100	<input type="radio"/> 101+	Length (inches)	<input type="text"/>	Comments	<input type="text"/>	
<input type="checkbox"/> <a href="#">Grunt-Tomtate</a>	<input type="radio"/> 1	<input type="radio"/> 2-10	<input type="radio"/> 11-100	<input type="radio"/> 101+	Length (inches)	<input type="text"/>	Comments	<input type="text"/>	
<input type="checkbox"/> <a href="#">Grunt-White</a>	<input type="radio"/> 1	<input type="radio"/> 2-10	<input type="radio"/> 11-100	<input type="radio"/> 101+	Length (inches)	<input type="text"/>	Comments	<input type="text"/>	
<input type="checkbox"/> <a href="#">Grunt?</a>	<input type="radio"/> 1	<input type="radio"/> 2-10	<input type="radio"/> 11-100	<input type="radio"/> 101+	Length (inches)	<input type="text"/>	Comments	<input type="text"/>	
<input type="checkbox"/> <a href="#">Hogfish</a>	<input type="radio"/> 1	<input type="radio"/> 2-10	<input type="radio"/> 11-100	<input type="radio"/> 101+	Length (inches)	<input type="text"/>	Comments	<input type="text"/>	
<input type="checkbox"/> <a href="#">Hogfish-Spanish</a>	<input type="radio"/> 1	<input type="radio"/> 2-10	<input type="radio"/> 11-100	<input type="radio"/> 101+	Length (inches)	<input type="text"/>	Comments	<input type="text"/>	
<input type="checkbox"/> <a href="#">Jack-Almaco</a>	<input type="radio"/> 1	<input type="radio"/> 2-10	<input type="radio"/> 11-100	<input type="radio"/> 101+	Length (inches)	<input type="text"/>	Comments	<input type="text"/>	
<input type="checkbox"/> <a href="#">Jack-Blue-Runner</a>	<input type="radio"/> 1	<input type="radio"/> 2-10	<input type="radio"/> 11-100	<input type="radio"/> 101+	Length (inches)	<input type="text"/>	Comments	<input type="text"/>	
<input type="checkbox"/> <a href="#">Jack-Greater-Amberjack</a>	<input type="radio"/> 1	<input type="radio"/> 2-10	<input type="radio"/> 11-100	<input type="radio"/> 101+	Length (inches)	<input type="text"/>	Comments	<input type="text"/>	
<input type="checkbox"/> <a href="#">Jack-Rainbow-Runner</a>	<input type="radio"/> 1	<input type="radio"/> 2-10	<input type="radio"/> 11-100	<input type="radio"/> 101+	Length (inches)	<input type="text"/>	Comments	<input type="text"/>	
<input type="checkbox"/> <a href="#">Jack-Round-Scad-Cigar-Minnow</a>	<input type="radio"/> 1	<input type="radio"/> 2-10	<input type="radio"/> 11-100	<input type="radio"/> 101+	Length (inches)	<input type="text"/>	Comments	<input type="text"/>	
<input type="checkbox"/> <a href="#">Jack?</a>	<input type="radio"/> 1	<input type="radio"/> 2-10	<input type="radio"/> 11-100	<input type="radio"/> 101+	Length (inches)	<input type="text"/>	Comments	<input type="text"/>	
<input type="checkbox"/> <a href="#">Jack?</a>	<input type="radio"/> 1	<input type="radio"/> 2-10	<input type="radio"/> 11-100	<input type="radio"/> 101+	Length (inches)	<input type="text"/>	Comments	<input type="text"/>	

<input type="checkbox"/> <a href="#">Lionfish</a>	<input type="radio"/> 1	<input type="radio"/> 2-10	<input type="radio"/> 11-100	<input type="radio"/> 101+	Length (inches)	<input type="text"/>	Comments	<input type="text"/>
<input type="checkbox"/> <a href="#">Mackeral-King</a>	<input type="radio"/> 1	<input type="radio"/> 2-10	<input type="radio"/> 11-100	<input type="radio"/> 101+	Length (inches)	<input type="text"/>	Comments	<input type="text"/>
<input type="checkbox"/> <a href="#">Mackeral-Spanish</a>	<input type="radio"/> 1	<input type="radio"/> 2-10	<input type="radio"/> 11-100	<input type="radio"/> 101+	Length (inches)	<input type="text"/>	Comments	<input type="text"/>
<input type="checkbox"/> <a href="#">Minnows-Glass-Small-Fry</a>	<input type="radio"/> 1	<input type="radio"/> 2-10	<input type="radio"/> 11-100	<input type="radio"/> 101+	Length (inches)	<input type="text"/>	Comments	<input type="text"/>
<input type="checkbox"/> <a href="#">Pinfish?</a>	<input type="radio"/> 1	<input type="radio"/> 2-10	<input type="radio"/> 11-100	<input type="radio"/> 101+	Length (inches)	<input type="text"/>	Comments	<input type="text"/>
<input type="checkbox"/> <a href="#">Porgy-Sheepshead-Porgy</a>	<input type="radio"/> 1	<input type="radio"/> 2-10	<input type="radio"/> 11-100	<input type="radio"/> 101+	Length (inches)	<input type="text"/>	Comments	<input type="text"/>
<input type="checkbox"/> <a href="#">Porgy-Sheepshead</a>	<input type="radio"/> 1	<input type="radio"/> 2-10	<input type="radio"/> 11-100	<input type="radio"/> 101+	Length (inches)	<input type="text"/>	Comments	<input type="text"/>
<input type="checkbox"/> <a href="#">Porgy?</a>	<input type="radio"/> 1	<input type="radio"/> 2-10	<input type="radio"/> 11-100	<input type="radio"/> 101+	Length (inches)	<input type="text"/>	Comments	<input type="text"/>
<input type="checkbox"/> <a href="#">Puffer-Bandtail</a>	<input type="radio"/> 1	<input type="radio"/> 2-10	<input type="radio"/> 11-100	<input type="radio"/> 101+	Length (inches)	<input type="text"/>	Comments	<input type="text"/>
<input type="checkbox"/> <a href="#">Puffer-Sharpnose</a>	<input type="radio"/> 1	<input type="radio"/> 2-10	<input type="radio"/> 11-100	<input type="radio"/> 101+	Length (inches)	<input type="text"/>	Comments	<input type="text"/>
<input type="checkbox"/> <a href="#">Puffer?</a>	<input type="radio"/> 1	<input type="radio"/> 2-10	<input type="radio"/> 11-100	<input type="radio"/> 101+	Length (inches)	<input type="text"/>	Comments	<input type="text"/>
<input type="checkbox"/> <a href="#">Ray?</a>	<input type="radio"/> 1	<input type="radio"/> 2-10	<input type="radio"/> 11-100	<input type="radio"/> 101+	Length (inches)	<input type="text"/>	Comments	<input type="text"/>
<input type="checkbox"/> <a href="#">Shark-Bull</a>	<input type="radio"/> 1	<input type="radio"/> 2-10	<input type="radio"/> 11-100	<input type="radio"/> 101+	Length (inches)	<input type="text"/>	Comments	<input type="text"/>
<input type="checkbox"/> <a href="#">Shark-Sandbar</a>	<input type="radio"/> 1	<input type="radio"/> 2-10	<input type="radio"/> 11-100	<input type="radio"/> 101+	Length (inches)	<input type="text"/>	Comments	<input type="text"/>
<input type="checkbox"/> <a href="#">Shark?</a>	<input type="radio"/> 1	<input type="radio"/> 2-10	<input type="radio"/> 11-100	<input type="radio"/> 101+	Length (inches)	<input type="text"/>	Comments	<input type="text"/>
<input type="checkbox"/> <a href="#">Sharksucker-Sharksucker</a>	<input type="radio"/> 1	<input type="radio"/> 2-10	<input type="radio"/> 11-100	<input type="radio"/> 101+	Length (inches)	<input type="text"/>	Comments	<input type="text"/>
<input type="checkbox"/> <a href="#">Sand-Perch</a>	<input type="radio"/> 1	<input type="radio"/> 2-10	<input type="radio"/> 11-100	<input type="radio"/> 101+	Length (inches)	<input type="text"/>	Comments	<input type="text"/>
<input type="checkbox"/> <a href="#">Seabass-Bank</a>	<input type="radio"/> 1	<input type="radio"/> 2-10	<input type="radio"/> 11-100	<input type="radio"/> 101+	Length (inches)	<input type="text"/>	Comments	<input type="text"/>
<input type="checkbox"/> <a href="#">Seabass-Belted-Sandfish</a>	<input type="radio"/> 1	<input type="radio"/> 2-10	<input type="radio"/> 11-100	<input type="radio"/> 101+	Length (inches)	<input type="text"/>	Comments	<input type="text"/>
<input type="checkbox"/> <a href="#">Seabass-Black</a>	<input type="radio"/> 1	<input type="radio"/> 2-10	<input type="radio"/> 11-100	<input type="radio"/> 101+	Length (inches)	<input type="text"/>	Comments	<input type="text"/>
<input type="checkbox"/> <a href="#">Seabass-Pygmy</a>	<input type="radio"/> 1	<input type="radio"/> 2-10	<input type="radio"/> 11-100	<input type="radio"/> 101+	Length (inches)	<input type="text"/>	Comments	<input type="text"/>
<input type="checkbox"/> <a href="#">Seabass?</a>	<input type="radio"/> 1	<input type="radio"/> 2-10	<input type="radio"/> 11-100	<input type="radio"/> 101+	Length (inches)	<input type="text"/>	Comments	<input type="text"/>
<input type="checkbox"/> <a href="#">Snapper-Gray</a>	<input type="radio"/> 1	<input type="radio"/> 2-10	<input type="radio"/> 11-100	<input type="radio"/> 101+	Length (inches)	<input type="text"/>	Comments	<input type="text"/>
<input type="checkbox"/> <a href="#">Snapper-Lane</a>	<input type="radio"/> 1	<input type="radio"/> 2-10	<input type="radio"/> 11-100	<input type="radio"/> 101+	Length (inches)	<input type="text"/>	Comments	<input type="text"/>
<input type="checkbox"/> <a href="#">Snapper-Red</a>	<input type="radio"/> 1	<input type="radio"/> 2-10	<input type="radio"/> 11-100	<input type="radio"/> 101+	Length (inches)	<input type="text"/>	Comments	<input type="text"/>
<input type="checkbox"/> <a href="#">Snapper-Vermillion</a>	<input type="radio"/> 1	<input type="radio"/> 2-10	<input type="radio"/> 11-100	<input type="radio"/> 101+	Length (inches)	<input type="text"/>	Comments	<input type="text"/>
<input type="checkbox"/> <a href="#">Snapper?</a>	<input type="radio"/> 1	<input type="radio"/> 2-10	<input type="radio"/> 11-100	<input type="radio"/> 101+	Length (inches)	<input type="text"/>	Comments	<input type="text"/>
<input type="checkbox"/> <a href="#">Soapfish-Whitespotted</a>	<input type="radio"/> 1	<input type="radio"/> 2-10	<input type="radio"/> 11-100	<input type="radio"/> 101+	Length (inches)	<input type="text"/>	Comments	<input type="text"/>

- [Spadefish-Atlantic](#)     1     2-10     11-100     101+    Length (inches)     Comments
- [Toadfish-Leopard](#)     1     2-10     11-100     101+    Length (inches)     Comments
- [Triggerfish-Gray](#)     1     2-10     11-100     101+    Length (inches)     Comments
- [Wrasse-Painted-Wrasse](#)     1     2-10     11-100     101+    Length (inches)     Comments
- [Wrasse-Slippery-Dick](#)     1     2-10     11-100     101+    Length (inches)     Comments
- Unlisted-See-Comments     1     2-10     11-100     101+    Length (inches)     Comments
- Unlisted-See-Comments     1     2-10     11-100     101+    Length (inches)     Comments
- Unlisted-See-Comments     1     2-10     11-100     101+    Length (inches)     Comments
- Unlisted-See-Comments     1     2-10     11-100     101+    Length (inches)     Comments
- Unlisted-See-Comments     1     2-10     11-100     101+    Length (inches)     Comments
- Unlisted-See-Comments     1     2-10     11-100     101+    Length (inches)     Comments
- Unlisted-See-Comments     1     2-10     11-100     101+    Length (inches)     Comments
- Unlisted-See-Comments     1     2-10     11-100     101+    Length (inches)     Comments
- Unlisted-See-Comments     1     2-10     11-100     101+    Length (inches)     Comments
- Unlisted-See-Comments     1     2-10     11-100     101+    Length (inches)     Comments

### Growth on Reef (Click on the hyper-links below for identification)

- [Algae](#)     1-25%     26-50%     51-75%     76-100%    Size (inches)     Describe
- [Anemone](#)     1-25%     26-50%     51-75%     76-100%    Size (inches)     Describe
- [Barnacles](#)     1-25%     26-50%     51-75%     76-100%    Size (inches)     Describe
- [Bivalves](#)     1-25%     26-50%     51-75%     76-100%    Size (inches)     Describe
- [Coral-Colorful-Sea-Whip](#)     1-25%     26-50%     51-75%     76-100%    Size (inches)     Describe
- [Coral-Hard-Unkown](#)     1-25%     26-50%     51-75%     76-100%    Size (inches)     Describe
- [Coral-Gorgonian](#)     1-25%     26-50%     51-75%     76-100%    Size (inches)     Describe
- [Coral-Occulina](#)     1-25%     26-50%     51-75%     76-100%    Size (inches)     Describe
- [Coral-White-Telesto](#)     1-25%     26-50%     51-75%     76-100%    Size (inches)     Describe
- [Feather-Duster-Worms](#)     1-25%     26-50%     51-75%     76-100%    Size (inches)     Describe
- [Sponges](#)     1-25%     26-50%     51-75%     76-100%    Size (inches)     Describe
- [Tunicates](#)     1-25%     26-50%     51-75%     76-100%    Size (inches)     Describe

- Unlisted-See-Comments  1-25%  26-50%  51-75%  76-100% Size (inches)  Describe
- Unlisted-See-Comments  1-25%  26-50%  51-75%  76-100% Size (inches)  Describe
- Unlisted-See-Comments  1-25%  26-50%  51-75%  76-100% Size (inches)  Describe

## Invertebrates at Reef (Click on the hyper-links below for identification)

- [Cowry-?](#)  1  2-10  11-100  101+ Size (inches)  Comments
- [Cowry-?](#)  1  2-10  11-100  101+ Size (inches)  Comments
- [Cowry-?](#)  1  2-10  11-100  101+ Size (inches)  Comments
- [Crab-Hermit](#)  1  2-10  11-100  101+ Size (inches)  Comments
- [Crab-Yellowline-Arrow](#)  1  2-10  11-100  101+ Size (inches)  Comments
- [Crab?](#)  1  2-10  11-100  101+ Size (inches)  Comments
- [Crab?](#)  1  2-10  11-100  101+ Size (inches)  Comments
- [Lobster-Shovelnose](#)  1  2-10  11-100  101+ Size (inches)  Comments
- [Octopus](#)  1  2-10  11-100  101+ Size (inches)  Comments
- [Sea-Cucumber](#)  1  2-10  11-100  101+ Size (inches)  Comments
- [Sea-Slug](#)  1  2-10  11-100  101+ Size (inches)  Comments
- [Sea-Star](#)  1  2-10  11-100  101+ Size (inches)  Comments
- [Sea-Urchin](#)  1  2-10  11-100  101+ Size (inches)  Comments
- [Shrimp-?](#)  1  2-10  11-100  101+ Size (inches)  Comments
- [Shrimp-?](#)  1  2-10  11-100  101+ Size (inches)  Comments
- [Snail-Florida-Horse-Conch](#)  1  2-10  11-100  101+ Size (inches)  Comments
- [Snail-?](#)  1  2-10  11-100  101+ Size (inches)  Comments
- [Snail-?](#)  1  2-10  11-100  101+ Size (inches)  Comments
- Unlisted-See-Comments  1  2-10  11-100  101+ Size (inches)  Comments
- Unlisted-See-Comments  1  2-10  11-100  101+ Size (inches)  Comments
- Unlisted-See-Comments  1  2-10  11-100  101+ Size (inches)  Comments
- Unlisted-See-Comments  1  2-10  11-100  101+ Size (inches)  Comments
- Unlisted-See-Comments  1  2-10  11-100  101+ Size (inches)  Comments

## Turtles and Air Breathers/Mammals (Click on the hyper-links below for identification)

<input type="checkbox"/> <a href="#">Dolphin?</a>	<input type="radio"/> 1	<input type="radio"/> 2-10	<input type="radio"/> 11-100	<input type="radio"/> 101+	Length (inches)	<input type="text"/>	Comments	<input type="text"/>
<input type="checkbox"/> <a href="#">Turtle-Loggerhead</a>	<input type="radio"/> 1	<input type="radio"/> 2-10	<input type="radio"/> 11-100	<input type="radio"/> 101+	Size (inches)	<input type="text"/>	Comments	<input type="text"/>
<input type="checkbox"/> <a href="#">Turtle?</a>	<input type="radio"/> 1	<input type="radio"/> 2-10	<input type="radio"/> 11-100	<input type="radio"/> 101+	Size (inches)	<input type="text"/>	Comments	<input type="text"/>
<input type="checkbox"/> <a href="#">Whale?</a>	<input type="radio"/> 1	<input type="radio"/> 2-10	<input type="radio"/> 11-100	<input type="radio"/> 101+	Size (inches)	<input type="text"/>	Comments	<input type="text"/>
<input type="checkbox"/> Unlisted-See-Comments	<input type="radio"/> 1	<input type="radio"/> 2-10	<input type="radio"/> 11-100	<input type="radio"/> 101+	Size (inches)	<input type="text"/>	Comments	<input type="text"/>

### Other Observations/Photos:

Observations

10 FLAR were deployed 11/12/2016. Initial survey was accomplished to verify location, orientation, and assess any damages. Location and proper orientation verified. No damage observed.

YouTube Video URL: <https://youtu.be/84pGPHiUhcM>

Photos?	<input type="text" value="Yes"/>	Attached?	<input type="text" value="Yes"/>
Video?	<input type="text" value="Yes"/>		

**Print Form**

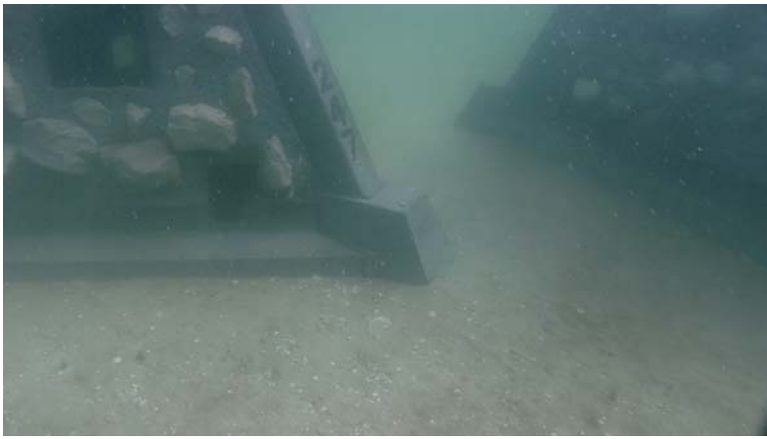


Image Field

Image Field



Image Field

Image Field



Image Field

Image Field





Image Field

Image Field



Image Field

Image Field



Image Field

Image Field

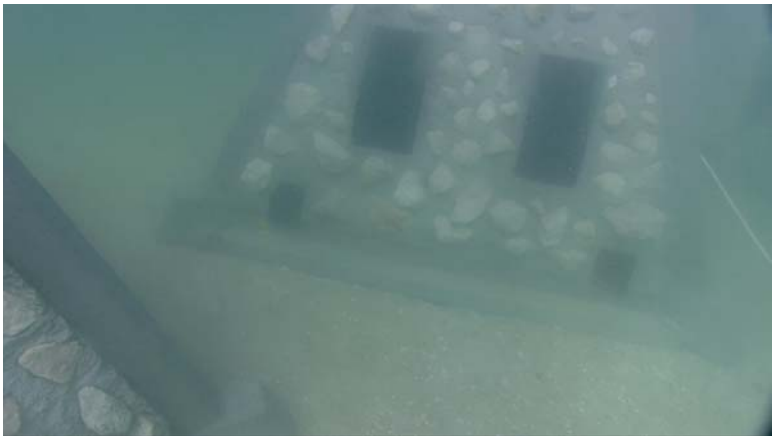


Image Field

Image Field

Image Field

Image Field

Image Field

Image Field

Image Field

Image Field

Image Field

Image Field

Image Field

Image Field